



DF-625

PARTS LIST

Published in Oct.'02
5G470770

Parts List

DF-625

NOTE

1. Indicate parts number and machine model when placing an order.

eg.	Parts Number	Parts Name	Machine Model	Cycle	Quantity
	5G410430	FRONT COVER	DF-625	60Hz	1

2. Service calls and freight will be charged separately.

3. Symbols in the "Parts Number" column.

- Parts with "●" indicates the spare parts and the parts without "●" can not be supplied.

4. See the last page of this parts list for the classification of the screws in the illustrations.

CONTENTS

FIG. 1 FRAMES	2
FIG. 2 PAPER ENTRANCE SECTION	4
FIG. 3 PAPER FOLDING SECTION (A)	6
FIG. 4 PAPER FOLDING SECTION (B)	8
FIG. 5 PAPER ALIGNING SECTION (A)	10
FIG. 6 PAPER ALIGNING SECTION (B)	12
FIG. 7 PAPER ALIGNING SECTION (C)	14
FIG. 8 SADDLE SECTION	16
FIG. 9 PAPER TRANSPORT SECTION (A)	18
FIG. 10 PAPER TRANSPORT SECTION (B)	20
FIG. 11 ELECTRICAL COMPONENTS	22
FIG. 12 PUNCH UNIT (PH-620)	24
FIG. 13 STAPLE SECTION	26
FIG. 14 HORIZONTAL TRANSPORT UNIT	28
• INDEX	30

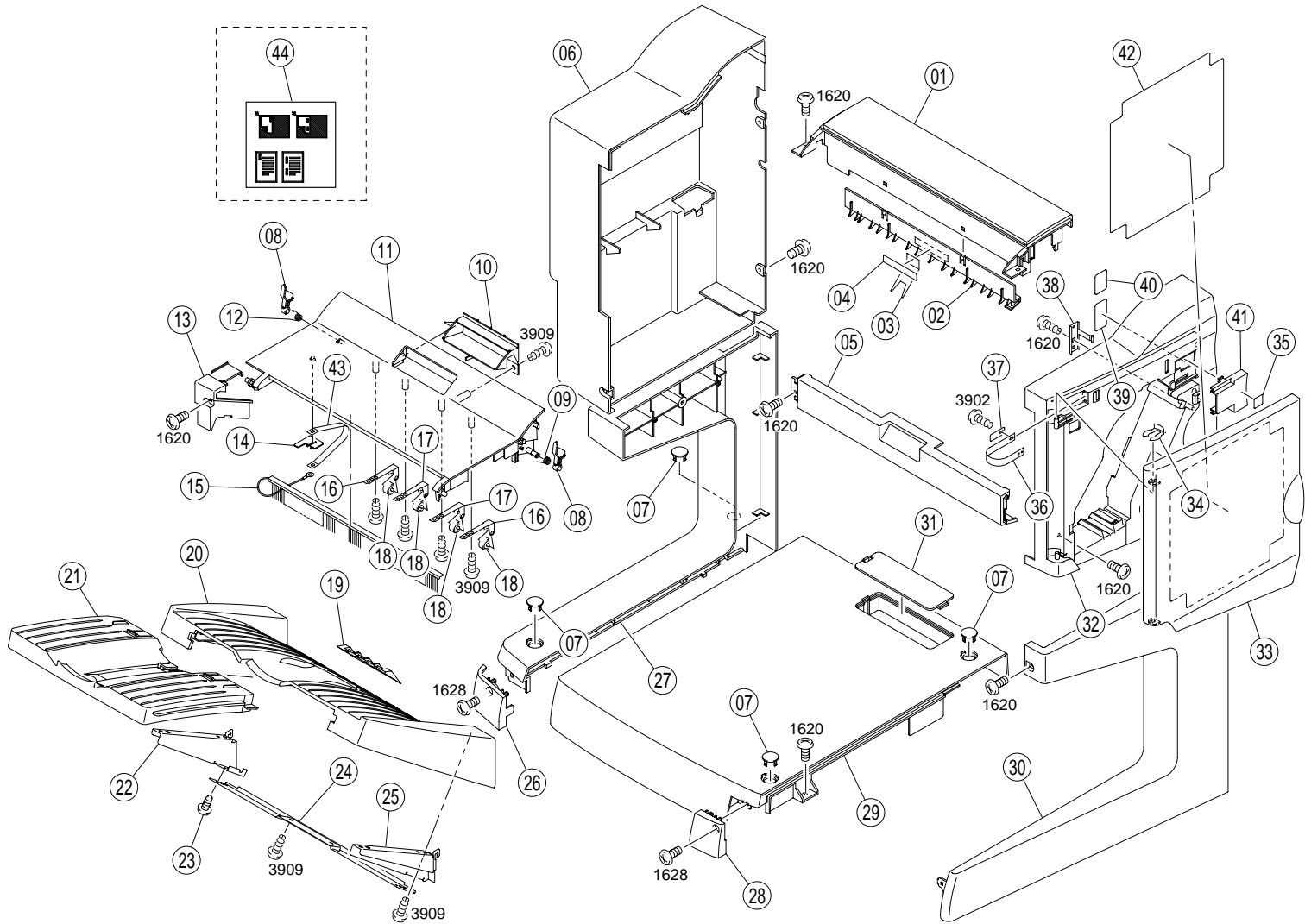


FIG. 1 FRAMES

5G4

SP	Ref. No.	Part. No.	Description	Quantity
●	1	5G410170	COVER	1
●	2	5G410180	GUIDE	1
●	3	5G410200	GUIDE	1
●	4	5G410190	GUIDE	1
●	5	5G410530	COVER	1
●	6	5G410210	COVER	1
●	7	5G410380	CAP	4
●	8	5G410230	LEVER	2
	9	5G410310	TORSION SPRING	1
●	10	5G410220	COVER	1
●	11	5G410570	TOP COVER	1
	12	5G410240	TORSION SPRING	1
●	13	5G410250	COVER	1
	14	5G410260	STOPPER	1
	15	5G410280	NEUTRALIZING BRUSH	1
	16	5G410300	PLATE SPRING	2
	17	5G410580	PLATE SPRING	2
●	18	5G410290	ROLLER	4
	19	5G410540	GUIDE PLATE	1
●	20	5G410320	TRAY	1
●	21	5G410330	TRAY	1
	22	5G410340	BRACKET	1
	23	5G410080	SCREW	2
	24	5G410350	REINFORCE PLATE	1
	25	5G410360	BRACKET	1
●	26	5G410390	COVER	1
●	27	5G410370	REAR COVER	1
●	28	5G410410	COVER	1
●	29	5G410400	COVER	1
●	30	5G410430	FRONT COVER	1
●	31	5G410420	COVER	1
●	32	5G410460	FRONT COVER	1
●	33	5G410440	FRONT COVER	1
●	34	5G410470	STOP RING	1
	35	5G410070	SEAL	1
	36	5G410520	BAND	1
	37	5G410510	STOPPER	1
	38	5G410500	PLATE SPRING	1
	39	5G410490	SEAL	1
	40	5G410550	GUIDE	1

SP	Ref. No.	Part. No.	Description	Quantity
●	41	5G410450	COVER	1
●	42	5G415860	INSTRUCTIONS	1
	43	5G410270	BAND	1
●	44	5G415880	LABEL	1

• Parts with "●" indicates the spare parts.

FIG. 2 PAPER ENTRANCE SECTION

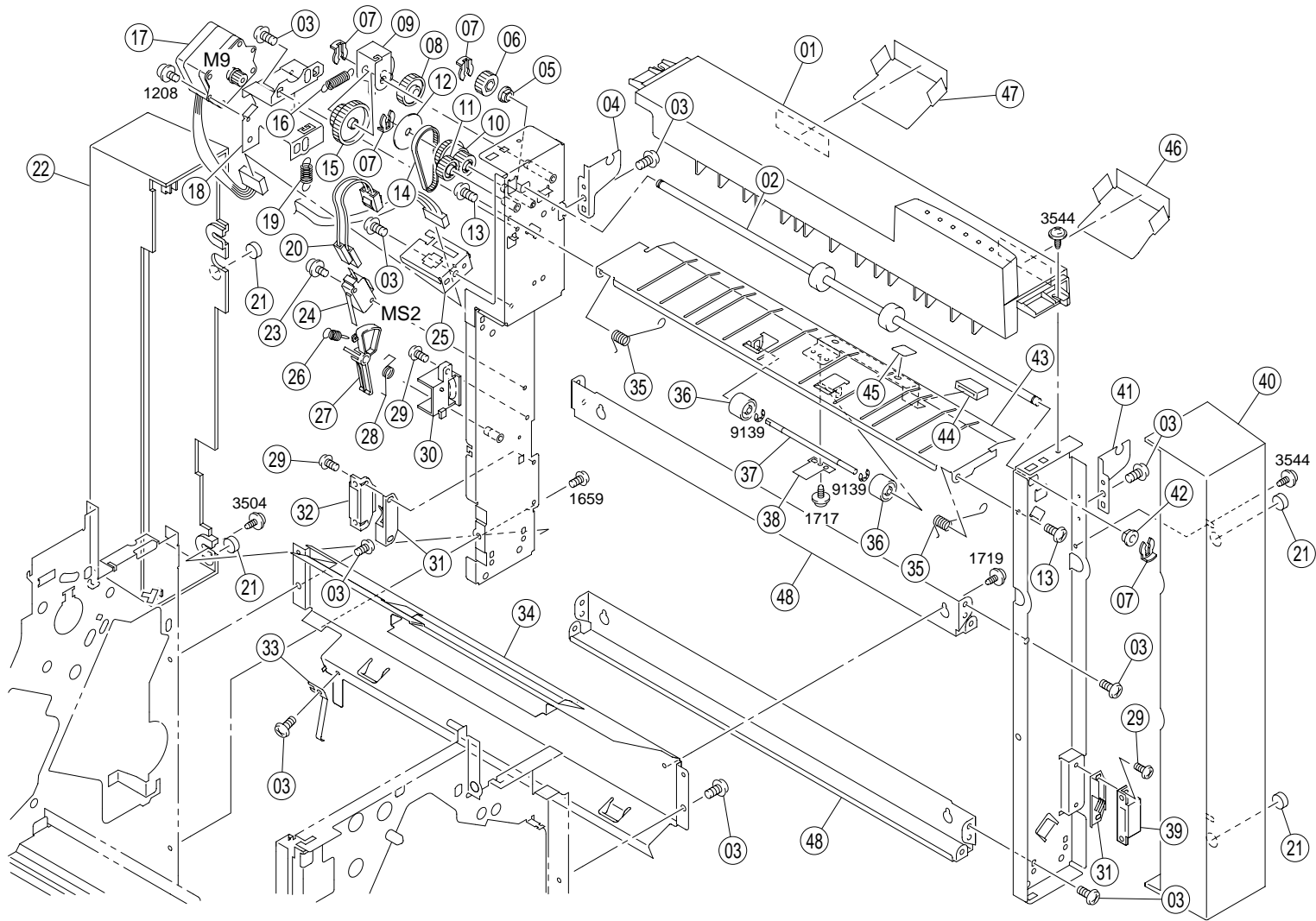


FIG. 2 PAPER ENTRANCE SECTION

5G4

SP	Ref. No.	Part. No.	Description	Quantity
●	1	5G410590	TOP COVER	1
●	2	5G410610	ROLLER	1
	3	5G410080	SCREW	17
	4	5G410600	BRACKET	1
	5	5G410680	BUSHING	1
●	6	5G410690	GEAR	1
●	7	5G410700	STOP RING	4
●	8	5G410040	GEAR22T	1
	9	5G410740	BRACKET	1
●	10	5G410710	PULLERY	1
●	11	5G410720	GEAR	1
●	12	5G410800	FLANGE	1
	13	5G410810	SCREW	2
●	14	5G410730	TIMING BELT	1
●	15	5G410950	GEAR	1
	16	5G410750	TENSION SPRING	1
●	17	5G410770	MOTOR	1
	18	5G410760	BRACKET	1
	19	5G410790	TENSION SPRING	1
	20	5G410830	WIRE HARNESS ASSY	1
	21	5G415890	STOPPER	4
●	22	5G410780	COVER	1
	23	5G410090	SCREW	1
●	24	5G410840	PUSHBUTTON SWITCH	1
	25	5G410820	BRACKET	1
	26	5G410850	TENSION SPRING	1
	27	5G410860	LEVER	1
	28	5G410960	TORSION SPRING	1
	29	5G410880	SCREW	5
	30	5G410870	GUIDE PLATE	1
	31	5GF20240	GROUND PLATE	2
●	32	5GH20090	MAGNET CATCH	1
	33	5G410900	PLATE SPRING	1
	34	5G410890	BRACKET	1
	35	5G410620	TORSION SPRING	2
●	36	5G410640	ROLLER	2
	37	5G410650	SHAFT	1
	38	5G410660	PLATE SPRING	1
●	39	5GF20140	MAGNET CATCH	1
●	40	5G410940	FRONT COVER	1

SP	Ref. No.	Part. No.	Description	Quantity
	41	5G410920	BRACKET	1
	42	5G410930	BUSHING	1
	43	5G410630	GUIDE PLATE	1
	44	5GH20780	HANDLE	1
	45	5G410670	GUIDE	1
●	46	5G415740	GUIDE	1
●	47	5G415750	GUIDE	1
	48	5G410910	BRACKET	2

• Parts with "●" indicates the spare parts.

FIG. 3 PAPER FOLDING SECTION (A)

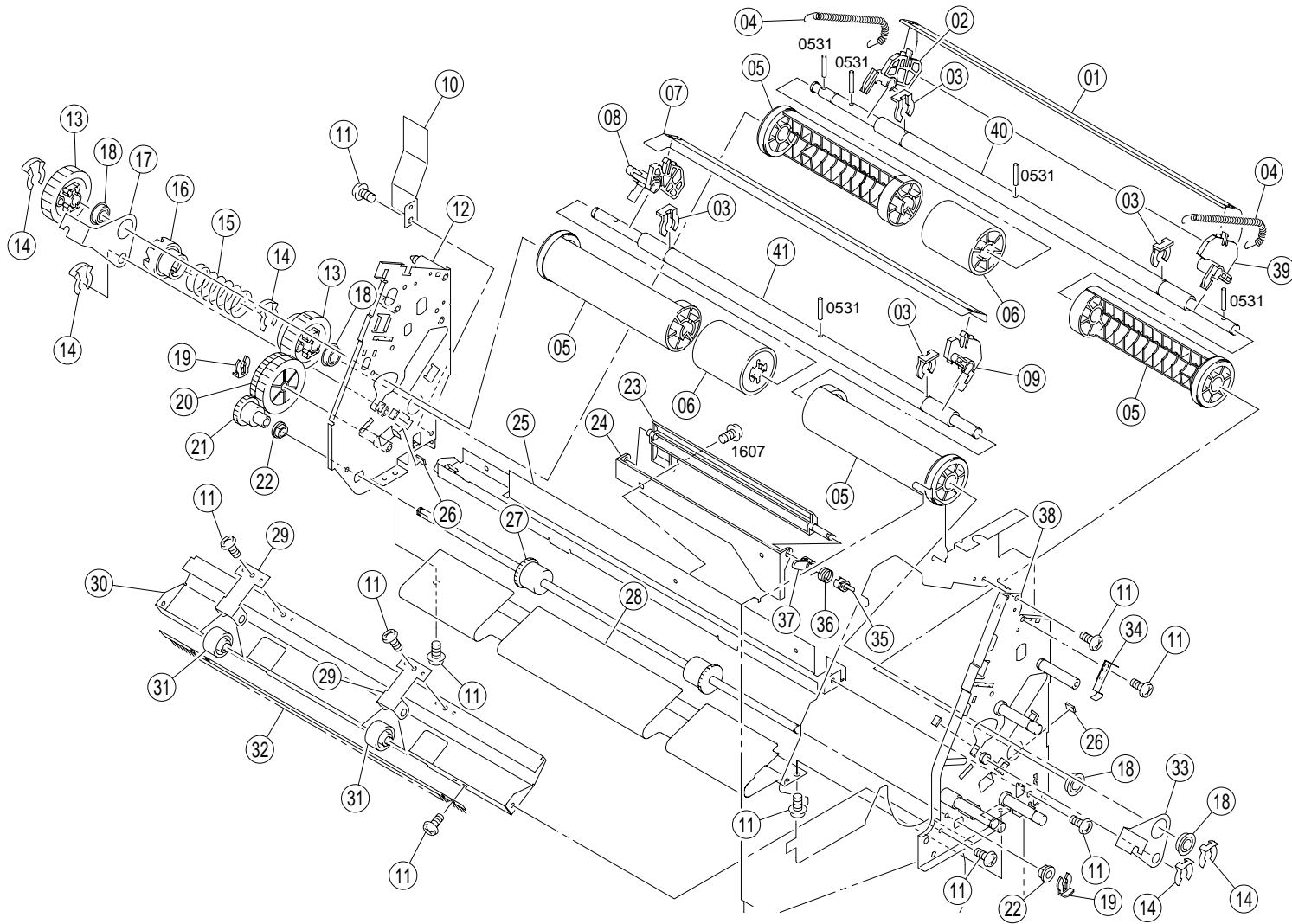


FIG. 3 PAPER FOLDING SECTION (A)

5G4

SP	Ref. No.	Part. No.	Description	Quantity
	1	5G410970	GUIDE PLATE	1
	2	5G411340	HOLDER	1
●	3	5G411000	STOP RING	4
	4	5G410980	TENSION SPRING	2
●	5	5G411010	ROLLER	4
●	6	5G411020	ROLLER	2
	7	5G411050	GUIDE PLATE	1
	8	5G411040	HOLDER	1
	9	5G411030	HOLDER	1
	10	5G411070	SHIELD PLATE	1
	11	5G410080	SCREW	15
	12	5G411080	FRAME ASSY	1
●	13	5G411090	GEAR	2
●	14	5G411100	STOP RING	5
	15	5G411110	PRESSURE SPRING	1
●	16	5G411120	GEAR	1
	17	5G411130	BRACKET	1
●	18	5G411150	BALL BEARING	4
●	19	5G410700	STOP RING	2
●	20	5G411160	GEAR	1
●	21	5G411170	GEAR	1
	22	5G410930	BUSHING	2
	23	5G411330	LEVER	1
	24	5G411320	HOLDER	1
	25	5G411240	BRACKET	1
●	26	5G411260	SEAL	4
●	27	5G411230	ROLLER	1
	28	5G411220	GUIDE PLATE	1
	29	5G411190	PLATE SPRING	2
	30	5G411180	GUIDE PLATE	1
●	31	5G411200	ROLLER	2
●	32	5G411210	NEUTRALIZING BRUSH	1
	33	5G411250	BRACKET	1
	34	5G411270	PLATE SPRING	1
●	35	5G411290	LEVER	1
	36	5G411300	TORSION SPRING	1
●	37	5G411310	LEVER	1
	38	5G411280	FRAME	1
	39	5G411350	HOLDER	1
	40	5G410990	SHAFT	1

SP	Ref. No.	Part. No.	Description	Quantity
	41	5G411060	SHAFT	1

• Parts with "●" indicates the spare parts.

FIG. 4 PAPER FOLDING SECTION (B)

5G4

SP	Ref. No.	Part. No.	Description	Quantity
	1	5G411360	CUSHION	1
	2	5G411370	HOOK	4
	3	5G411380	BRACKET	1
	4	5G411390	TENSION SPRING	2
●	5	5G411400	SOLID STATE SWITCH	2
	6	5G411410	DUCT	1
	7	5G411920	WIRE HARNESS ASSY	1
	8	5G410080	SCREW	14
●	9	5G411420	STOP RING	8
●	10	5G411430	CAM	1
●	11	5G411500	ROLLER	2
	12	5G411490	SHAFT	2
	13	5G411470	BUSHING	7
	14	5G411450	CUSHION	2
●	15	5G411440	ROLLER	2
	16	5G411460	BRACKET	2
	17	5G411480	REINFORCE PLATE	2
●	18	5G411510	ROLLER	2
	19	5G411530	PLATE SPRING	4
	20	5G411540	PLATE SPRING	2
	21	5G411870	BRACKET	1
	22	5G411830	BRACKET	1
	23	5G411810	BRACKET	1
	24	5G411550	FRAME	1
	25	5G411720	GUIDE PLATE	1
●	26	5G411560	GEAR	1
●	27	5G411570	PULLERY	1
	28	5G411580	BUSHING	2
	29	5G410800	FLANGE	1
●	30	5G410700	STOP RING	9
	31	5G411610	SLIDER	2
●	32	5G411100	STOP RING	2
	33	5G411600	SHOULDER SCREW	2
	34	5G411590	TENSION SPRING	2
	35	5G415720	PRESSURE SPRING	1
	36	5G415730	GUIDE	2
●	37	5G411630	GEAR	1
	38	5G411620	BRACKET	1
	39	5G411640	WIRE HARNESS ASSY	1
	40	5G411650	WIRE HARNESS ASSY	1

SP	Ref. No.	Part. No.	Description	Quantity
	41	5G411660	TENSION SPRING	1
	42	5G410930	BUSHING	3
●	43	5G411670	CLUTCH	1
●	44	5G411680	PULLERY	1
●	45	5G411700	PULLEY	1
	46	5G410680	BUSHING	1
	47	5G411710	TENSION SPRING	2
●	48	5G411800	COLLER	2
●	49	5G411900	CAM	1
●	50	5G411740	HOLDER	2
●	51	5G411750	ROLLER	2
	52	5G411880	EARTH GROUND	1
●	53	5G411770	SEAL	1
●	54	5G411930	SOLID STATE SWITCH	1
	55	5G411760	GUIDE PLATE	1
	56	5G411790	GUIDE PLATE	1
●	57	5G411780	ROLLER	1
	58	5G411890	SHAFT	1
●	59	5G411730	CAM	1
	60	5G411910	FRAME	1
	61	5G411840	GUIDE PLATE	1
●	62	5G411850	CAM	1
	63	5G411520	PLATE SPRING	2
●	64	5G411690	TIMING BELT	1
	65	5G411860	SHAFT	1
	66	5G411820	SHAFT	1

• Parts with "●" indicates the spare parts.

FIG. 5 PAPER ALIGNING SECTION (A)

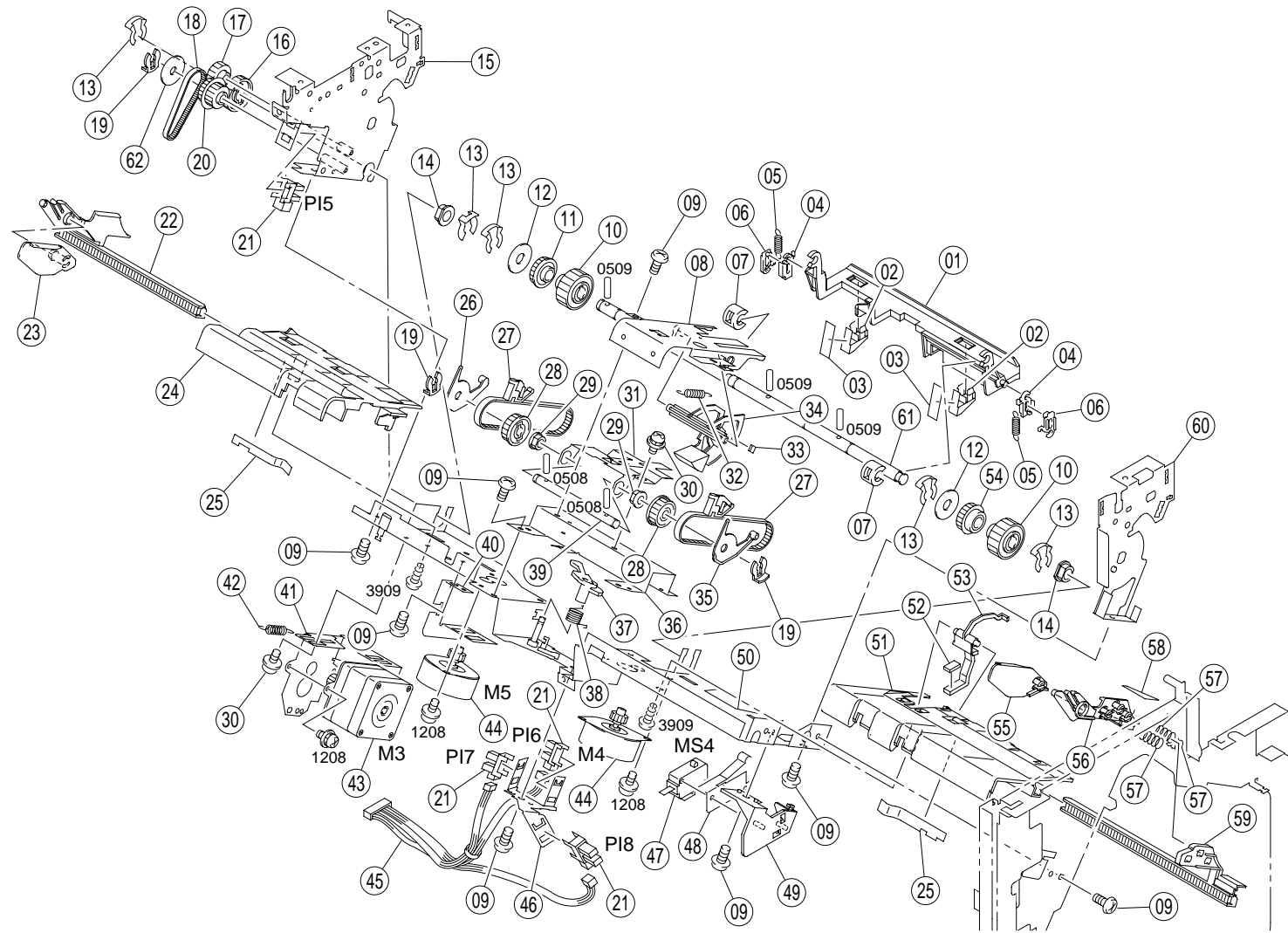


FIG. 5 PAPER ALIGNING SECTION (A)

5G4

SP	Ref. No.	Part. No.	Description	Quantity
	1	5G411940	STOPPER	1
	2	5G411980	SET PLATE	2
	3	5G411990	GUIDE	2
●	4	5G411950	HOOK	2
	5	5G411960	TENSION SPRING	2
●	6	5G411970	HOOK	2
	7	5G412000	STOPPER	2
	8	5G412430	GUIDE PLATE	1
	9	5G410080	SCREW	13
●	10	5G412020	GEAR	2
●	11	5G412030	PULLEY	1
	12	5G412040	FLANGE	2
●	13	5G411100	STOP RING	5
	14	5G412050	BUSHING	2
	15	5G412080	FRAME	1
●	16	5G412090	GEAR	1
●	17	5G412100	GEAR	1
●	18	5G416180	TIMING BELT	1
●	19	5G410700	STOP RING	3
●	20	5G412120	GEAR	1
●	21	5G411400	SOLID STATE SWITCH	4
	22	5G412130	PLATE	1
	23	5G412140	PLATE	1
●	24	5G412150	TRAY	1
	25	5G412160	PLATE SPRING	2
	26	5G412170	GUIDE PLATE	1
●	27	5G412180	PAWL	2
●	28	5G412190	PULLEY	2
	29	5G410930	BUSHING	2
	30	5G412200	SCREW	3
	31	5G412440	HOLDER	1
	32	5G412450	TENSION SPRING	1
	33	5G412220	WEIGHT	1
●	34	5G412210	LEVER	1
	35	5G412230	GUIDE PLATE	1
	36	5G412240	BRACKET	1
●	37	5G412260	LEVER	1
	38	5G412270	TORSION SPRING	1
	39	5G412250	SHAFT	1
	40	5G412490	BRACKET	1

SP	Ref. No.	Part. No.	Description	Quantity
	41	5G412300	BRACKET	1
	42	5G412290	TENSION SPRING	1
●	43	5G412310	MOTOR	1
●	44	5G412320	MOTOR	2
	45	5G412330	WIRE HARNESS ASSY	1
	46	5G412340	BRACKET	1
	47	5G412350	PUSHBUTTON SWITCH	1
	48	5G412360	PLATE SPRING	1
	49	5G412370	HOLDER	1
	50	5G412280	BASE FLAME	1
●	51	5G412380	TRAY	1
●	52	5G412460	WEIGHT	1
●	53	5G412390	LEVER	1
●	54	5G412060	PULLEY	1
	55	5G412400	PLATE	1
	56	5G412410	PLATE	1
	57	5G412480	PRESSURE SPRING	3
	58	5G412470	GUIDE	1
	59	5G412420	RACK	1
	60	5G412070	FRAME	1
	61	5G412010	SHAFT	1
	62	5G412110	FLANGE	1

• Parts with "●" indicates the spare parts.

FIG. 6 PAPER ALIGNING SECTION (B)

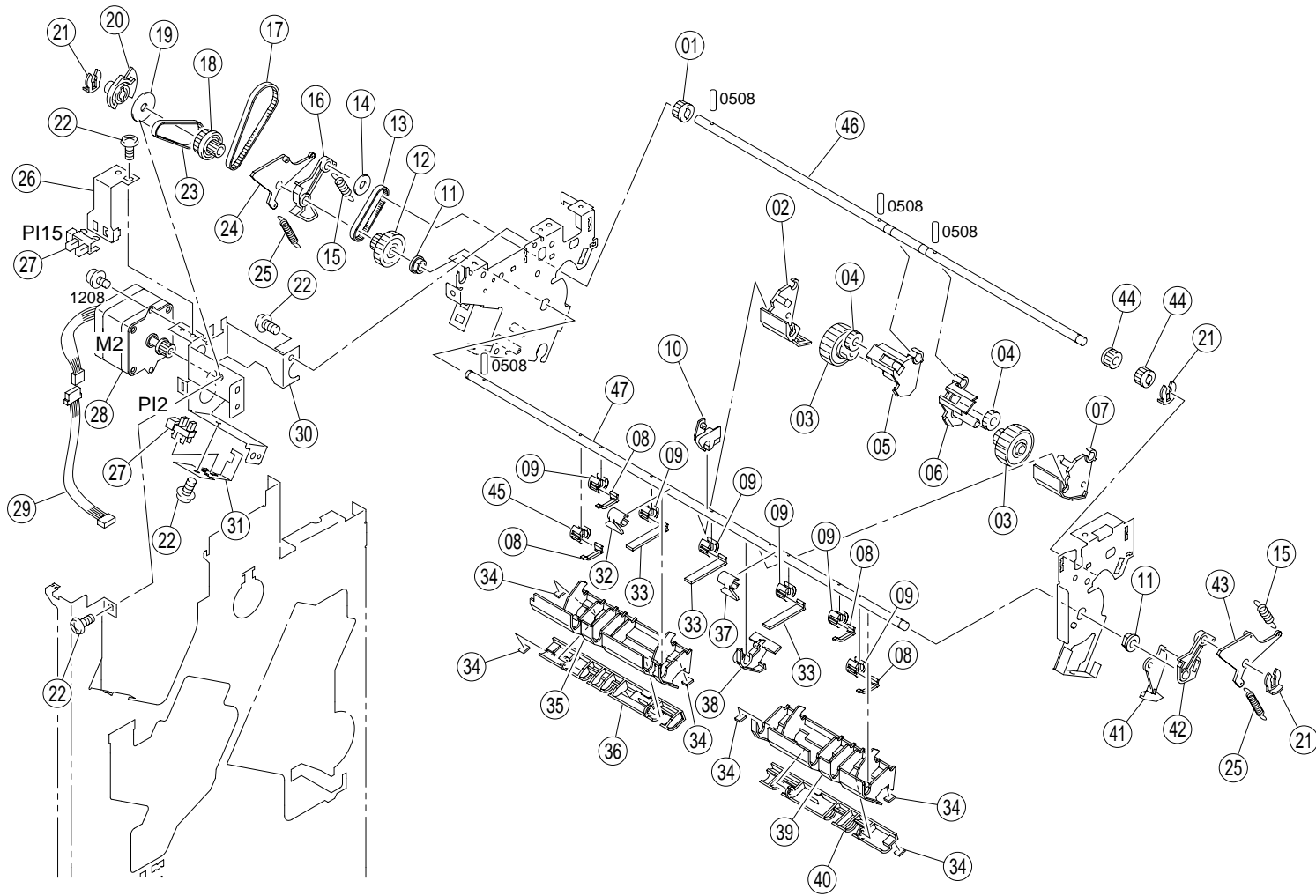


FIG. 6 PAPER ALIGNING SECTION (B)

5G4

SP	Ref. No.	Part. No.	Description	Quantity
●	1	5G413100	PULLEY	1
	2	5G412900	HOLDER	1
●	3	5G412910	ROLLER	2
●	4	5G412920	GEAR	2
	5	5G412930	HOLDER	1
	6	5G412950	HOLDER	1
	7	5G412960	HOLDER	1
	8	5G412850	PADDLE	4
	9	5G413090	HOLDER	6
	10	5G412940	HOLDER	1
	11	5G410930	BUSHING	2
●	12	5G412660	GEAR	1
●	13	5G412670	TIMING BELT	1
	14	5G413120	FLANGE	1
	15	5G412680	TENSION SPRING	2
	16	5G412690	ARM	1
●	17	5G412620	TIMING BELT	1
●	18	5G412710	PULLEY	1
	19	5G412110	FLANGE	1
●	20	5G412720	ACTUATOR	1
●	21	5G410700	STOP RING	3
	22	5G410080	SCREW	7
●	23	5G416180	TIMING BELT	1
	24	5G412700	ARM	1
	25	5G413020	TENSION SPRING	2
	26	5G412730	BRACKET	1
●	27	5G411400	SOLID STATE SWITCH	2
●	28	5G412310	MOTOR	1
	29	5G412760	WIRE HARNESS ASSY	1
	30	5G412740	BRACKET	1
	31	5G412750	BRACKET	1
	32	5G412860	PAWL	1
●	33	5G412870	PADDLE	3
	34	5G412800	CUSHION	6
	35	5G412820	GUIDE	1
	36	5G412790	GUIDE	1
	37	5G413110	PAWL	1
	38	5G412880	LEVER	1
	39	5G412830	GUIDE	1
	40	5G412810	GUIDE	1

SP	Ref. No.	Part. No.	Description	Quantity
	41	5G412990	LEVER	1
	42	5G413000	ARM	1
	43	5G413010	ARM	1
●	44	5G412980	GEAR	2
	45	5G412840	HOLDER	1
	46	5G412970	SHAFT	1
	47	5G412890	SHAFT	1

• Parts with "●" indicates the spare parts.

FIG. 7 PAPER ALIGNING SECTION (C)

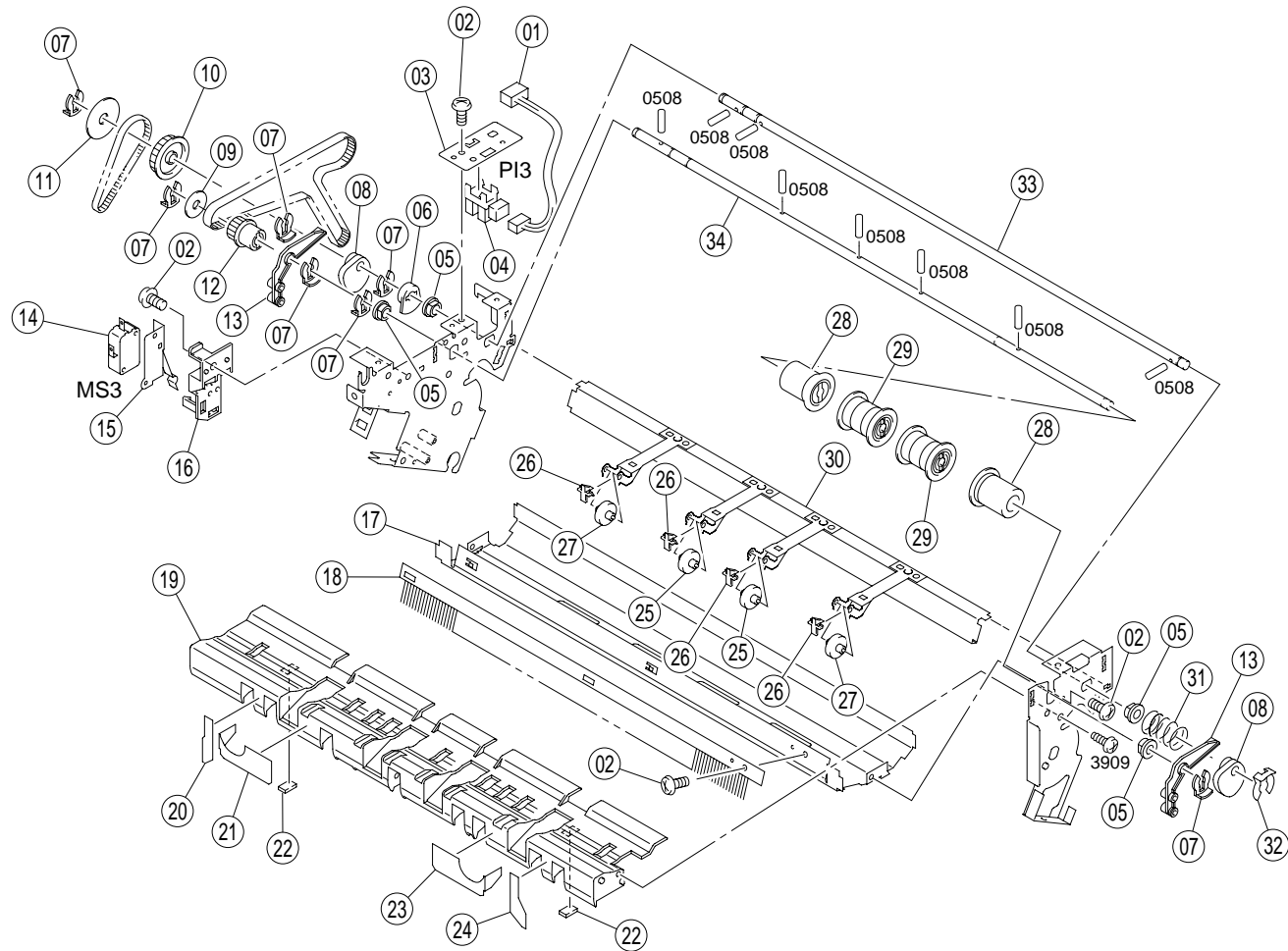


FIG. 7 PAPER ALIGNING SECTION (C)

5G4

SP	Ref. No.	Part. No.	Description	Quantity
	1	5G412560	WIRE HARNESS ASSY	1
	2	5G410080	SCREW	4
	3	5G412570	BRACKET	1
●	4	5G411400	SOLID STATE SWITCH	1
	5	5G410930	BUSHING	4
●	6	5G412580	ACTUATOR	1
●	7	5G410700	STOP RING	7
●	8	5G412590	CAM	2
	9	5G412630	FLANGE	1
●	10	5G412610	PULLEY	1
	11	5G410800	FLANGE	1
●	12	5G412640	PULLEY	1
●	13	5G412650	ARM	2
●	14	5G412350	PUSHBUTTON SWITCH	1
	15	5G412770	BRACKET	1
	16	5G412780	HOLDER	1
	17	5G412520	GUIDE PLATE	1
●	18	5G412550	NEUTRALIZING BRUSH	1
	19	5G413040	GUIDE	1
	20	5G415770	GUIDE	1
	21	5G415790	GUIDE	1
	22	5G412800	CUSHION	2
	23	5G415780	GUIDE	1
	24	5G415760	GUIDE	1
●	25	5G413080	ROLLER	2
●	26	5G413050	MEMBER	4
●	27	5G413060	ROLLER	2
●	28	5G412530	ROLLER	2
●	29	5G412540	ROLLER	2
	30	5G413070	BRACKET	1
	31	5G413030	PRESSURE SPRING	1
●	32	5G410470	STOP RING	1
	33	5G412500	SHAFT	1
	34	5G412510	SHAFT	1

• Parts with "●" indicates the spare parts.

FIG. 8 SADDLE SECTION

5G4

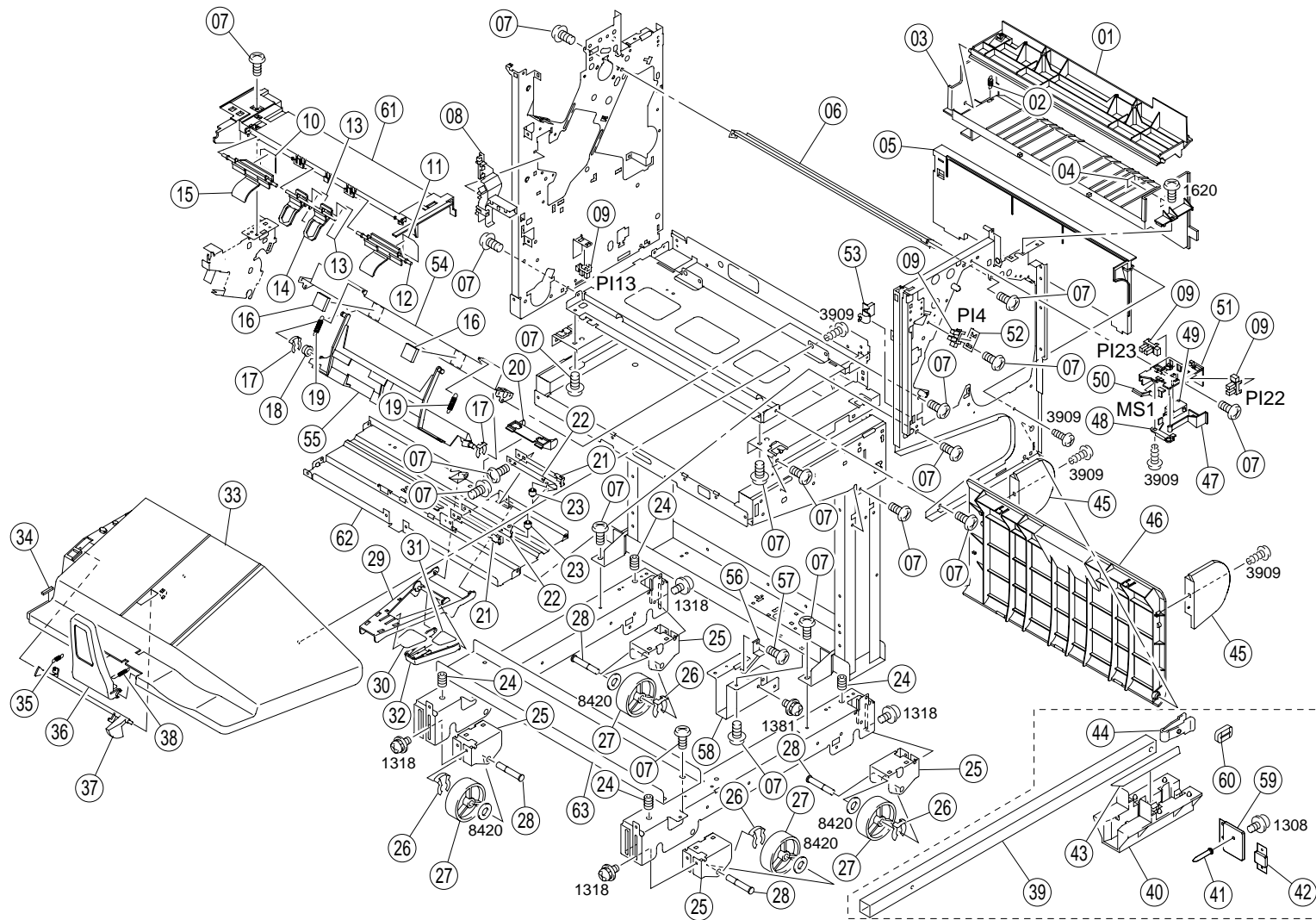


FIG. 8 SADDLE SECTION

5G4

SP	Ref. No.	Part. No.	Description	Quantity
	1	5G413130	GUIDE	1
	2	5G413590	TENSION SPRING	1
	3	5G413140	GUIDE	1
	4	5G410550	GUIDE	1
●	5	5G413150	COVER	1
	6	5G413160	GUIDE PLATE	1
	7	5G410080	SCREW	39
	8	5G413170	DUCT	1
●	9	5G411400	SOLID STATE SWITCH	4
	10	5G413200	GUIDE	1
	11	5G413240	GUIDE	1
	12	5G413230	LEVER	1
	13	5G413220	GUIDE	2
	14	5G413210	LEVER	1
	15	5G413190	LEVER	1
	16	5G413260	CUSHION	2
●	17	5G410470	STOP RING	2
	18	5G413290	BUSHING	1
	19	5G413600	TENSION SPRING	2
	20	5G413280	PLATE	1
	21	5G413310	PLATE SPRING	2
	22	5G413320	PLATE SPRING	2
●	23	5G413330	ROLLER	2
	24	5G413420	SCREW	4
	25	5G413430	BRACKET	4
●	26	5G411100	STOP RING	4
●	27	5G413440	ROLLER	4
	28	5G413450	SHAFT	4
	29	5G413390	ARM	1
	30	5G413400	WEIGHT	1
	31	5G413570	WEIGHT	1
	32	5G413410	LEVER	1
●	33	5G413340	TRAY	1
	34	5G413580	CUSHION	1
	35	5G413360	TENSION SPRING	1
	36	5G413350	POSITIONING PLATE	1
●	37	5G413370	ACTUATOR	1
	38	5G413380	TENSION SPRING	1
	39	5G410150	RAIL	1
	40	5G415970	HOLDER	1

SP	Ref. No.	Part. No.	Description	Quantity
	41	5GH22510	SHAFT	1
	42	5GH22490	BRACKET	1
	43	5G410160	SLIDER	3
	44	5GF20310	STOPPER	1
●	45	5G413500	COVER	2
●	46	5G413490	COVER	1
	47	5G413530	LEVER	1
	48	5G413510	HOLDER	1
●	49	5G412350	PUSHBUTTON SWITCH	1
	50	5G413520	LEVER	1
	51	5G413540	HOLDER	1
	52	5G413560	BRACKET	1
	53	5G413550	STOPPER	1
	54	5G413250	BRACKET	1
	55	5G413270	STOPPER	1
	56	5G413480	PLATE SPRING	1
	57	5G410880	SCREW	1
	58	5G413470	BRACKET	1
	59	5GH22500	SUCTION PLATE	1
	60	5G415980	SPACER	1
●	61	5G413180	COVER	1
	62	5G413300	BRACKET	1
	63	5G413460	REINFORCE PLATE	1

• Parts with "●" indicates the spare parts.

FIG. 9 PAPER TRANSPORT SECTION (A)

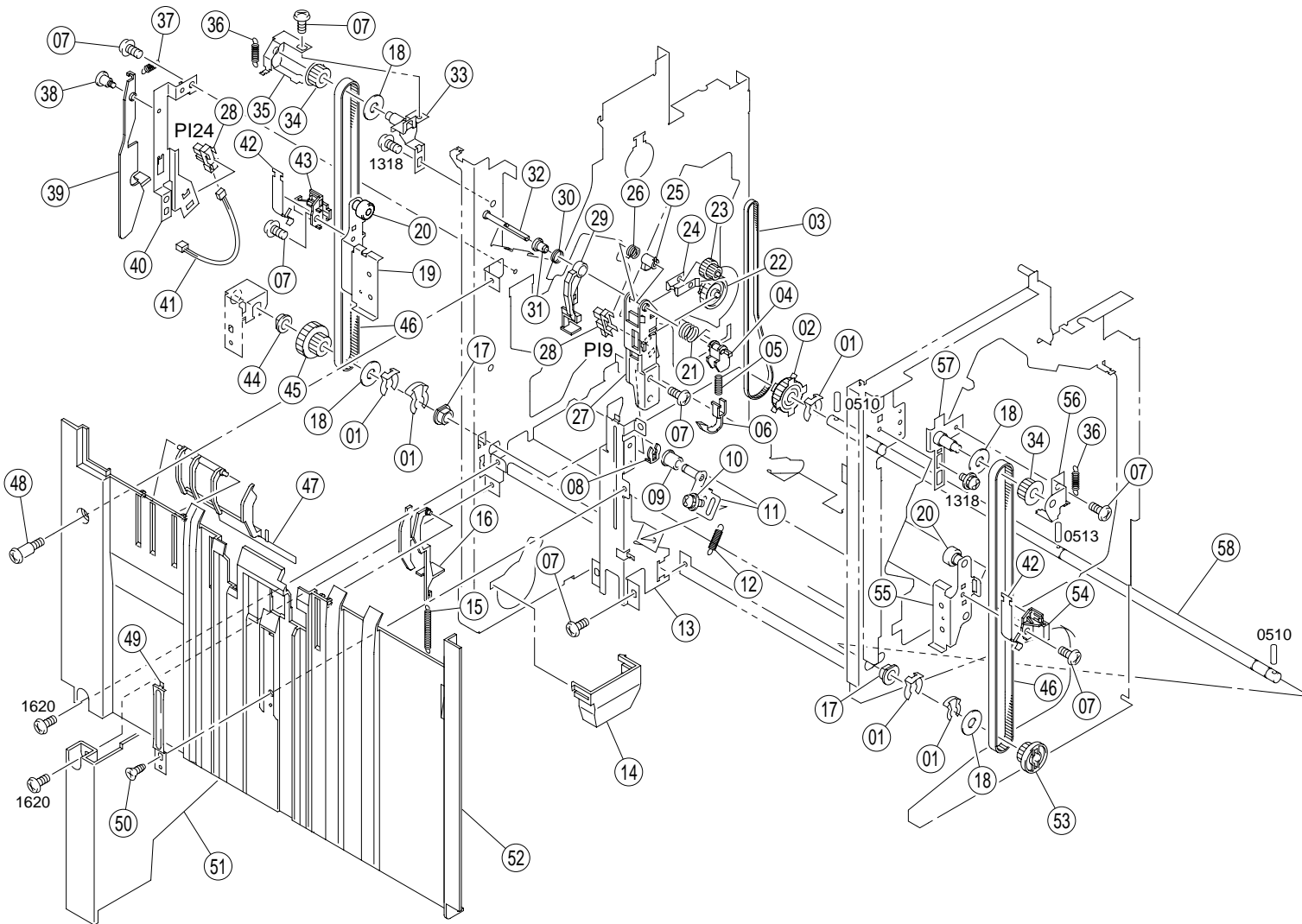


FIG. 9 PAPER TRANSPORT SECTION (A)

5G4

SP	Ref. No.	Part. No.	Description	Quantity
●	1	5G411100	STOP RING	5
●	2	5G413610	PULLEY	1
●	3	5G413620	TIMING BELT	1
	4	5G413630	HOLDER	1
	5	5G413640	PRESSURE SPRING	1
●	6	5G413650	LEVER	1
	7	5G410080	SCREW	10
●	8	5G410700	STOP RING	1
●	9	5G414020	ROLLER	1
	10	5G412200	SCREW	1
	11	5G414030	BRACKET	1
	12	5G414040	TENSION SPRING	1
	13	5G414010	BRACKET	1
●	14	5G414000	COVER	1
	15	5G413990	TENSION SPRING	1
	16	5G413930	LEVER	1
	17	5G412050	BUSHING	2
●	18	5G413780	FLANGE	4
	19	5G413890	BRACKET	1
●	20	5G414060	ROLLER	4
	21	5G413660	TORSION SPRING	1
●	22	5G413670	PULLEY	1
●	23	5G413680	GEAR	1
	24	5G413690	HOLDER	1
●	25	5G413700	LEVER	1
	26	5G413710	TORSION SPRING	1
	27	5G413760	HOLDER	1
●	28	5G411400	SOLID STATE SWITCH	2
	29	5G413750	LEVER	1
	30	5G413720	TORSION SPRING	1
●	31	5G413730	ROLLER	1
	32	5G413740	SHAFT	1
	33	5G413770	BRACKET	1
●	34	5G413790	PULLEY	2
	35	5G413800	BRACKET	1
	36	5G413810	TENSION SPRING	2
	37	5G413360	TENSION SPRING	1
	38	5G413830	SHOULDER SCREW	1
	39	5G413840	LEVER	1
	40	5G413820	BRACKET	1

SP	Ref. No.	Part. No.	Description	Quantity
	41	5G413850	WIRE HARNESS ASSY	1
	42	5G413860	PLATE	2
	43	5G413870	HOLDER	1
	44	5G413900	BUSHING	1
●	45	5G413910	GEAR	1
●	46	5G413880	TIMING BELT	2
	47	5G413920	LEVER	1
	48	5G413940	SHOULDER SCREW	1
	49	5G413960	PLATE	1
	50	5G413970	SCREW	1
●	51	5G413950	COVER	1
	52	5G413980	GUIDE PLATE	1
●	53	5G414050	PULLEY	1
	54	5G414070	HOLDER	1
	55	5G414110	BRACKET	1
	56	5G414090	HOLDER	1
	57	5G414080	BRACKET	1
	58	5G414100	SHAFT	1

• Parts with "●" indicates the spare parts.

FIG. 10 PAPER TRANSPORT SECTION (B)

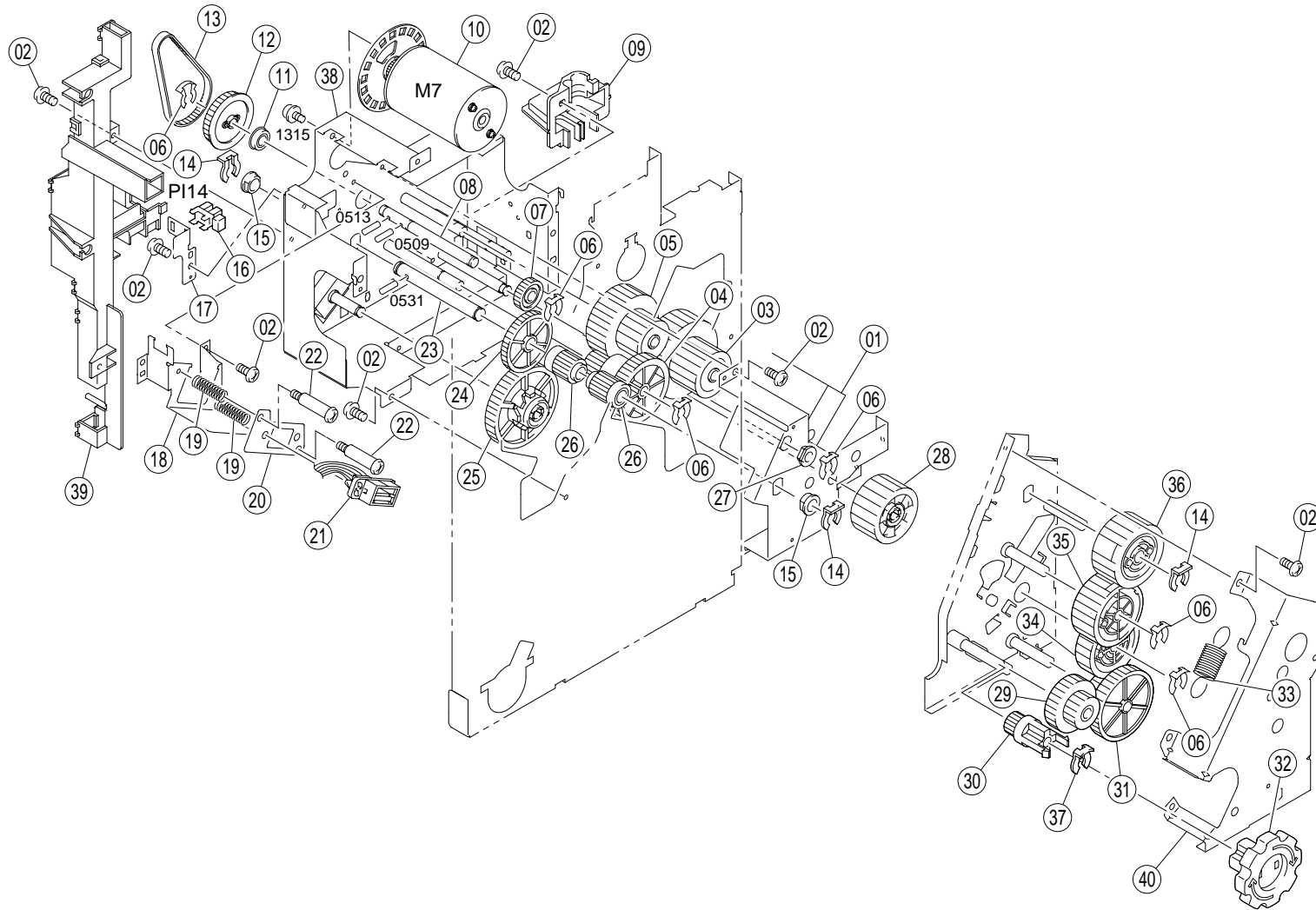


FIG. 10 PAPER TRANSPORT SECTION (B)

5G4

SP	Ref. No.	Part. No.	Description	Quantity
	1	5G414330	BRACKET	1
	2	5G410080	SCREW	20
●	3	5G414320	GEAR	1
●	4	5G414300	GEAR	1
●	5	5G414310	GEAR	1
●	6	5G411100	STOP RING	6
●	7	5G414280	GEAR	1
	8	5G414250	SHAFT	1
●	9	5G414120	COVER	1
●	10	5G414130	MOTOR	1
●	11	5G411150	BALL BEARING	1
●	12	5G414140	PULLEY	1
●	13	5G414150	TIMING BELT	1
●	14	5G411420	STOP RING	3
	15	5G411470	BUSHING	2
●	16	5G414170	SOLID STATE SWITCH	1
	17	5G414160	PLATE	1
	18	5G414190	BRACKET	1
	19	5G414200	PRESSURE SPRING	2
	20	5G414210	PLATE	1
	21	5G414230	WIRE HARNESS ASSY	1
	22	5G414220	SCREW	2
	23	5G414240	SHAFT	1
●	24	5G414270	GEAR	1
●	25	5G414260	GEAR	1
●	26	5G414290	GEAR	2
	27	5G412050	BUSHING	1
●	28	5G414340	GEAR	1
●	29	5G414360	GEAR	1
●	30	5G414350	GEAR	1
●	31	5G414370	GEAR	1
●	32	5G414380	KNOB	1
	33	5G411660	TENSION SPRING	1
●	34	5G414400	GEAR	1
●	35	5G414410	GEAR	1
●	36	5G414420	GEAR	1
●	37	5G410700	STOP RING	1
	38	5G414430	BRACKET	1
	39	5G414180	DUCT	1
	40	5G414390	BRACKET	1

• Parts with "●" indicates the spare parts.

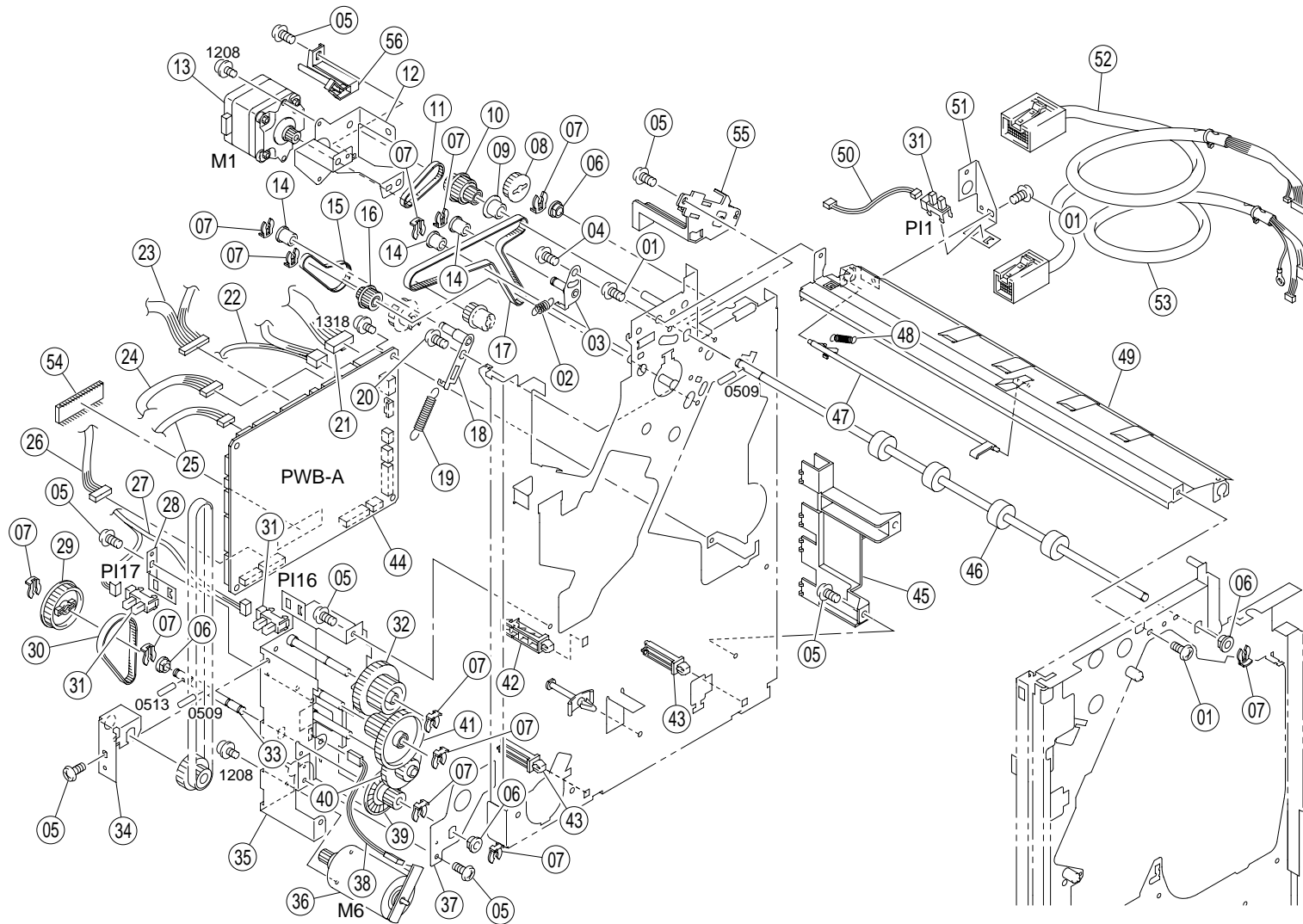


FIG. 11 ELECTRICAL COMPONENTS

5G4

SP	Ref. No.	Part. No.	Description	Quantity
	1	5G414450	SCREW	4
	2	5G414530	TENSION SPRING	1
	3	5G414520	BRACKET	1
	4	5G414510	SCREW	1
	5	5G410080	SCREW	12
	6	5G410930	BUSHING	4
●	7	5G410700	STOP RING	11
●	8	5G414470	GEAR	1
●	9	5G414480	ROLLER	1
●	10	5G414490	PULLEY	1
●	11	5G414500	TIMING BELT	1
	12	5G414560	BRACKET	1
●	13	5G414550	MOTOR	1
●	14	5G414020	ROLLER	3
●	15	5G414570	TIMING BELT	1
●	16	5G414580	PULLEY	1
●	17	5G412600	TIMING BELT	1
	18	5G414590	BRACKET	1
	19	5G414600	TENSION SPRING	1
	20	5G412200	SCREW	1
	21	5G414610	WIRE HARNESS ASSY	1
	22	5G414620	WIRE HARNESS ASSY	1
	23	5G412760	WIRE HARNESS ASSY	1
	24	5G414880	WIRE HARNESS ASSY	1
	25	5G414630	WIRE HARNESS ASSY	1
	26	5G414640	WIRE HARNESS ASSY	1
	27	5G414650	WIRE HARNESS ASSY	1
	28	5G414660	BRACKET	1
●	29	5G414670	PULLEY	1
●	30	5G414680	TIMING BELT	1
●	31	5G411400	SOLID STATE SWITCH	3
●	32	5G414780	GEAR	1
	33	5G414700	SHAFT	1
	34	5G414690	BRACKET	1
	35	5G414710	BRACKET	1
●	36	5G414730	MOTOR	1
	37	5G414740	PLATE	1
	38	5G414720	WIRE HARNESS ASSY	1
●	39	5G414750	PULLEY	1
●	40	5G414760	GEAR	1

SP	Ref. No.	Part. No.	Description	Quantity
●	41	5G414770	GEAR	1
	42	5G414790	PWB SUPPORT	1
	43	5G414800	PWB SUPPORT	2
●	44	5G410010	PWB ASSY	1
	45	5G414810	DUCT	1
●	46	5G414820	ROLLER	1
●	47	5G414830	LEVER	1
	48	5G414840	TENSION SPRING	1
	49	5G414850	GUIDE PLATE	1
	50	5G412560	WIRE HARNESS ASSY	1
	51	5G414440	BRACKET	1
	52	5G414870	WIRE HARNESS ASSY	1
	53	5G414860	WIRE HARNESS ASSY	1
●	54	5G415850	IC	1
	55	5G414460	HOLDER	1
	56	5G414540	DUCT	1

• Parts with "●" indicates the spare parts.

FIG. 12 PUNCH UNIT (PH-620)

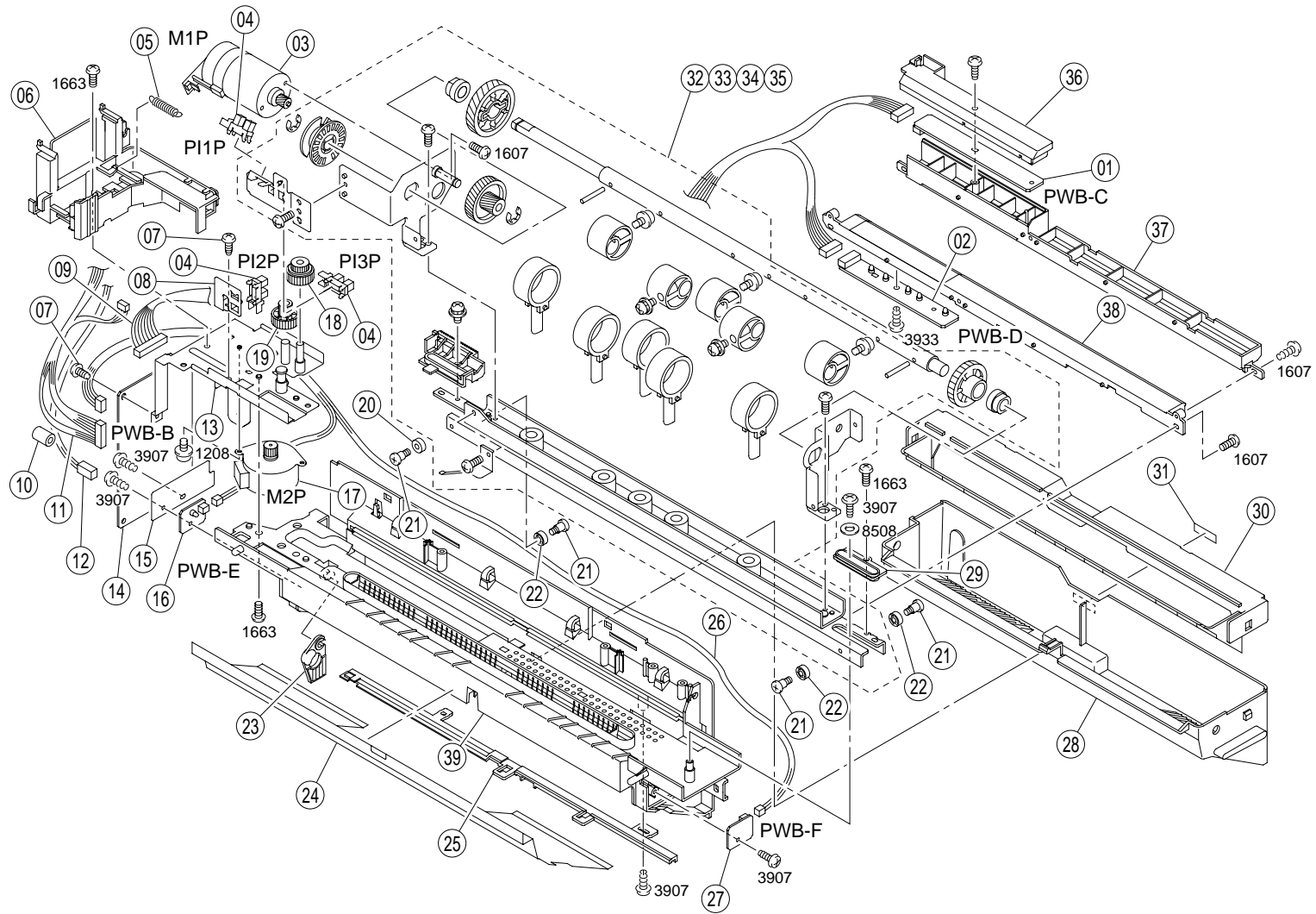


FIG. 12 PUNCH UNIT (PH-620)

5G4

SP	Ref. No.	Part. No.	Description	Quantity
●	1	5G415170	PWB ASSY	1
●	2	5G415150	PWB ASSY	1
●	3	5G414890	MOTOR	1
●	4	5G411400	SOLID STATE SWITCH	3
	5	5G414900	TENSION SPRING	1
	6	5G414910	DUCT	1
	7	5G410080	SCREW	3
	8	5G414920	BRACKET	1
	9	5G414970	WIRE HARNESS ASSY	1
	10	5G415800	FERRITE CORE	1
	11	5G414960	WIRE HARNESS ASSY	1
	12	5G414980	WIRE HARNESS ASSY	1
	13	5G414950	BRACKET	1
●	14	5G410020	PWB ASSY	1
	15	5G414990	GUIDE	1
●	16	5G415000	PWB ASSY	1
●	17	5G415010	MOTOR	1
●	18	5G414930	GEAR	1
●	19	5G414940	GEAR	1
●	20	5G415090	ROLLER	1
	21	5G415080	SHOULDER SCREW	4
●	22	5G415100	ROLLER	3
	23	5G415020	SHUTTER	1
	24	5G415030	GUIDE	1
	25	5G415040	PLATE	1
	26	5G415070	WIRE HARNESS ASSY	1
●	27	5G415050	PWB ASSY	1
	28	5G415120	TRASH BOX	1
	29	5G415110	GUIDE	1
	30	5G415130	GUIDE	1
	31	5F913030	LABEL	1
●	32	5G415810	PUNCH UNIT	1
●	33	5G415820	PUNCH UNIT	1
●	34	5G415830	PUNCH UNIT	1
●	35	5G415840	PUNCH UNIT	1
●	36	5G415180	COVER	1
	37	5G415160	HOLDER	1
	38	5G415140	HOLDER	1
	39	5G415060	BASE	1

• Parts with "●" indicates the spare parts.

FIG. 13 STAPLE SECTION

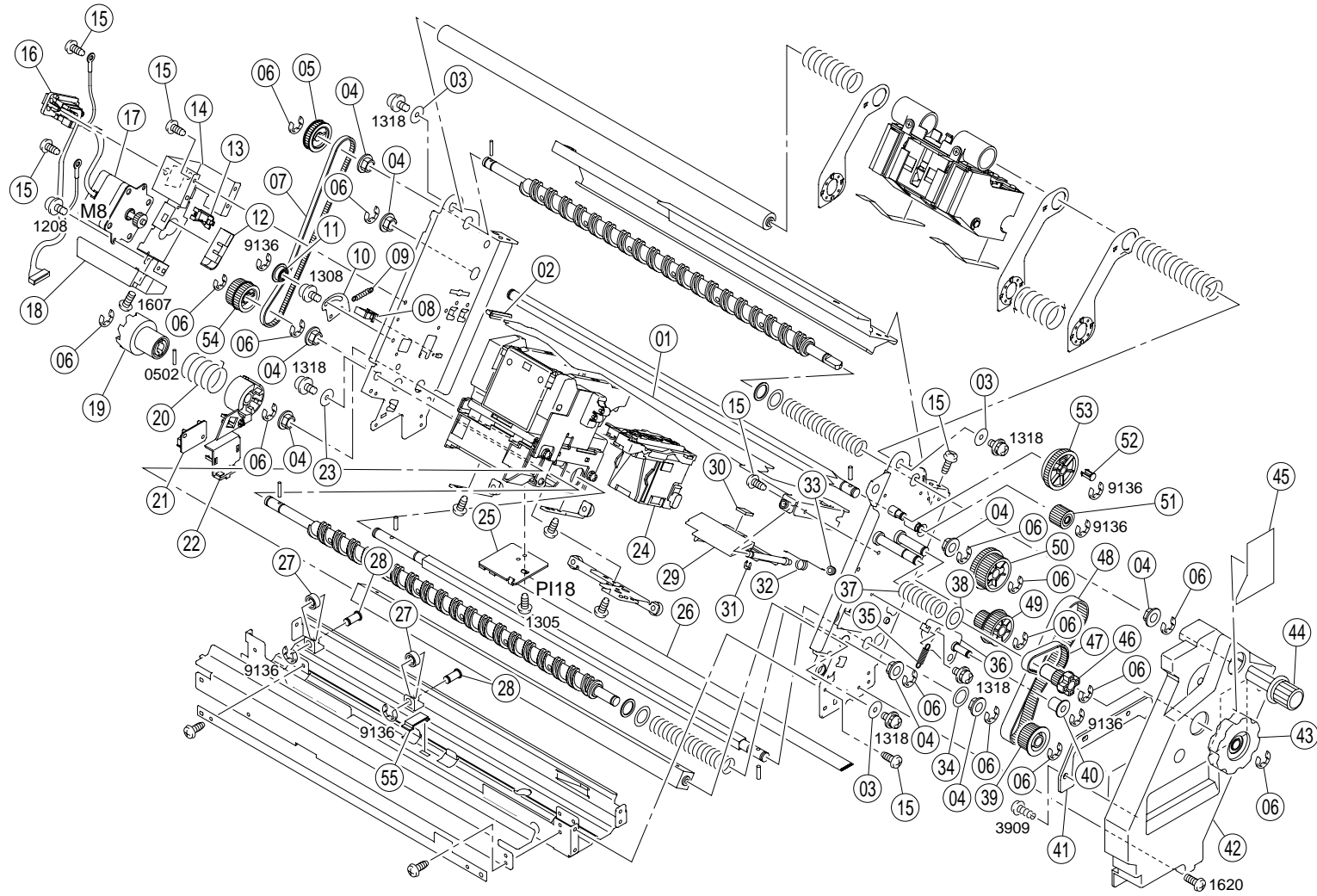


FIG. 13 STAPLE SECTION

5G4

SP	Ref. No.	Part. No.	Description	Quantity
	1	5G415690	GUIDE	1
	2	5G415360	HOLDER	1
	3	5G415190	WASHER	3
	4	5G415200	BUSHING	8
●	5	5G415210	PULLEY	1
	6	5G415220	RETAINING RING	16
●	7	5G415700	TIMING BELT	1
	8	5G415350	WIRING SADDLE	1
	9	5G415340	TENSION SPRING	1
	10	5G415330	PLATE	1
●	11	5G415320	ROLLER	1
	12	5G415230	GUIDE	1
	13	5G415240	HOLDER	1
	14	5G415250	BRACKET	1
	15	5G410880	SCREW	9
	16	5G415260	WIRE HARNESS ASSY	1
●	17	5G415270	MOTOR	1
	18	5G415280	STOPPER	1
●	19	5G415290	SPROCKET	1
	20	5G415300	PRESSURE SPRING	1
●	21	5G415390	PWB ASSY	1
	22	5G415310	HOLDER	1
	23	5G415380	WASHER	1
●	24	5G415410	STAPLE CARTRIDGE	1
●	25	5G415400	PWB ASSY	1
	26	5G415710	FLEXIBLE CABLE	1
●	27	5G415430	ROLLER	2
	28	5G415420	SHAFT	2
	29	5G415450	GUIDE	1
	30	5G415460	CUSHION	1
●	31	5G415470	STOP RING	1
	32	5G415480	TORSION SPRING	1
	33	5G415490	BUSHING	1
●	34	5G415520	COLLER	1
	35	5G415510	TENSION SPRING	1
	36	5G415500	BRACKET	1
	37	5G415590	PRESSURE SPRING	1
	38	5G415600	FLANGE	1
●	39	5G415570	PULLEY	1
●	40	5G415580	ROLLER	1

SP	Ref. No.	Part. No.	Description	Quantity
●	41	5G415530	COVER	1
●	42	5G415540	COVER	1
●	43	5G415550	KNOB	1
●	44	5G415560	KNOB	1
●	45	5G415870	LABEL	1
●	46	5G415620	PULLEY	1
●	47	5G415610	TIMING BELT	1
●	48	5G415630	TIMING BELT	1
●	49	5G415640	GEAR	1
●	50	5G415650	PULLEY	1
●	51	5G415660	GEAR	1
●	52	5G415670	PIN	1
●	53	5G415680	GEAR	1
●	54	5G415370	PULLEY	1
	55	5G415440	HOLDER	1

• Parts with "●" indicates the spare parts.

FIG. 14 HORIZONTAL TRANSPORT UNIT

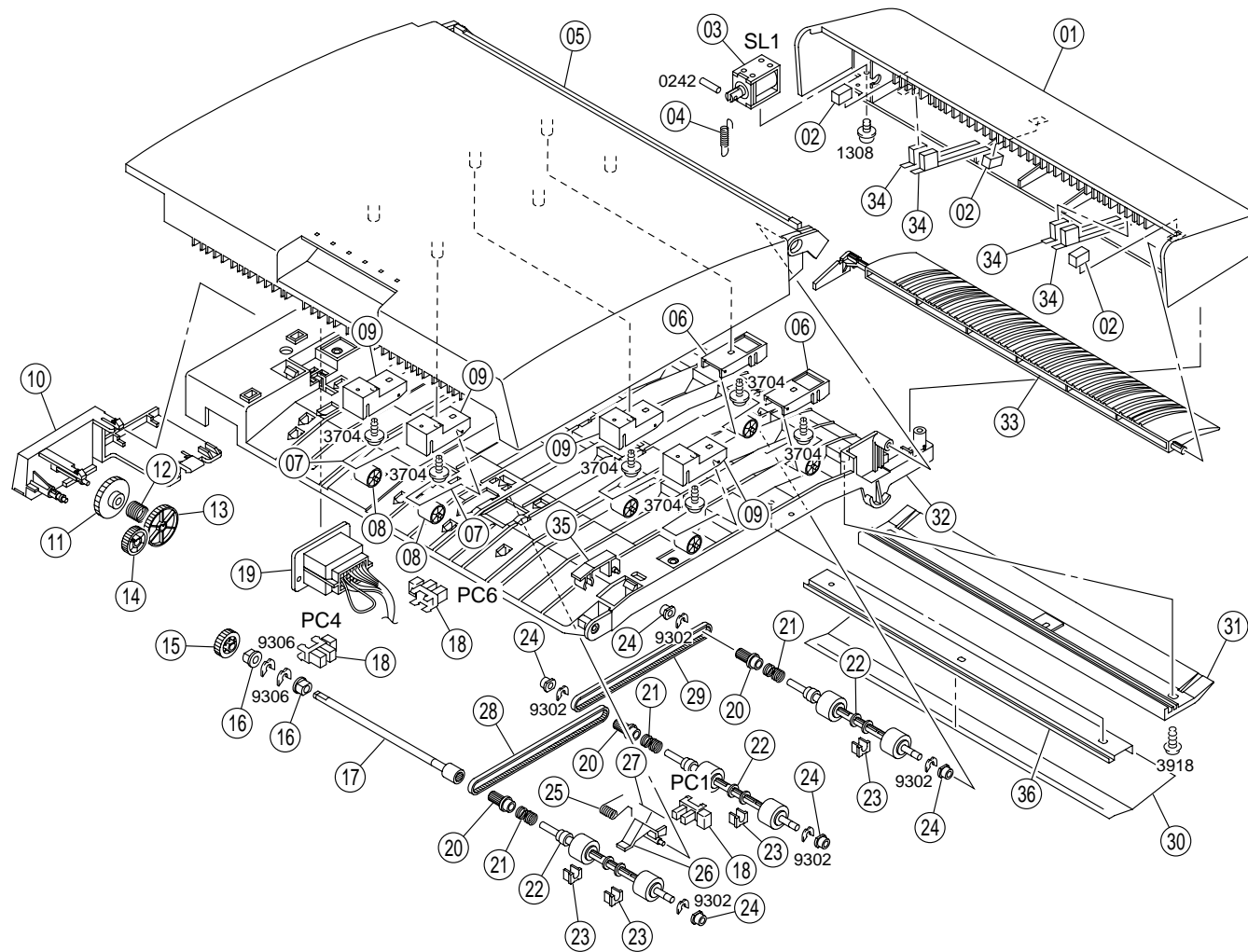


FIG. 14 HORIZONTAL TRANSPORT UNIT

5G4

SP	Ref. No.	Part. No.	Description	Quantity
●	1	5G410120	GUIDE	1
●	2	5GF20720	CUSHION	3
●	3	5GF20780	SOLENOID	1
	4	5GF20710	TENSION SPRING	1
●	5	5G410110	GUIDE	1
	6	5GF20760	HOLDER	2
	7	5GF20670	SPRING	6
●	8	5GF20680	ROLL	6
	9	5GF20750	HOLDER	4
	10	5G410140	HOLDER	1
●	11	5G415930	GEAR	1
●	12	5G415940	SPRING	1
●	13	5G415920	GEAR	1
●	14	5G410130	GEAR	1
●	15	5G415910	GEAR	1
	16	5G410030	BUSHING	2
●	17	5GF20570	JOINT	1
●	18	5GF20830	PHOTO INTERRUPTER	3
	19	5G415960	WIRE HARNESS ASY	1
●	20	5GF20590	PULLEY	3
	21	5GF20580	TORSION SPRING	3
●	22	5GF20660	ROLLER	3
	23	5GF20690	BUSHING	4
	24	5GF20010	BUSHING	5
	25	5GF20740	TORSION SPRING	1
●	26	5GF20730	ACTUATOR	1
	27	5G415950	GUIDE	1
●	28	5GF20600	TIMING BELT	1
●	29	5GF20610	TIMING BELT	1
	30	5GF20540	GUIDE	1
	31	5GF20530	REINFORCE PLATE	1
	32	5G410100	GUIDE	1
	33	5GF20700	PAWL	1
●	34	5G415990	GUIDE	4
	35	5GF20770	4664-4001-01	1
	36	5G415900	REINFORCE PLATE	1

• Parts with "●" indicates the spare parts.

INDEX

5G4

SP	Part. No.	Description	Quantity	Fig. No.
	5F913030	LABEL	1	12
	5GF20010	BUSHING	5	14
●	5GF20140	MAGNET CATCH	1	2
	5GF20240	GROUND PLATE	2	2
	5GF20310	STOPPER	1	8
	5GF20530	REINFORCE PLATE	1	14
	5GF20540	GUIDE	1	14
●	5GF20570	JOINT	1	14
	5GF20580	TORSION SPRING	3	14
●	5GF20590	PULLEY	3	14
●	5GF20600	TIMING BELT	1	14
●	5GF20610	TIMING BELT	1	14
●	5GF20660	ROLLER	3	14
	5GF20670	SPRING	6	14
●	5GF20680	ROLL	6	14
	5GF20690	BUSHING	4	14
	5GF20700	PAWL	1	14
	5GF20710	TENSION SPRING	1	14
●	5GF20720	CUSHION	3	14
●	5GF20730	ACTUATOR	1	14
	5GF20740	TORSION SPRING	1	14
	5GF20750	HOLDER	4	14
	5GF20760	HOLDER	2	14
	5GF20770	4664-4001-01	1	14
●	5GF20780	SOLENOID	1	14
●	5GF20830	PHOTO INTERRUPTER	3	14
●	5GH20090	MAGNET CATCH	1	2
	5GH20780	HANDLE	1	2
	5GH22490	BRACKET	1	8
	5GH22500	SUCTION PLATE	1	8
	5GH22510	SHAFT	1	8
●	5G410010	PWB ASSY	1	11
●	5G410020	PWB ASSY	1	12
	5G410030	BUSHING	2	14
●	5G410040	GEAR22T	1	2
	5G410070	SEAL	1	1
	5G410080	SCREW	156	1,2,3,4,5, 6,7,8,9,10, 11,12
	5G410090	SCREW	1	2

SP	Part. No.	Description	Quantity	Fig. No.
	5G410100	GUIDE	1	14
●	5G410110	GUIDE	1	14
●	5G410120	GUIDE	1	14
●	5G410130	GEAR	1	14
	5G410140	HOLDER	1	14
	5G410150	RAIL	1	8
	5G410160	SLIDER	3	8
●	5G410170	COVER	1	1
●	5G410180	GUIDE	1	1
●	5G410190	GUIDE	1	1
●	5G410200	GUIDE	1	1
●	5G410210	COVER	1	1
●	5G410220	COVER	1	1
●	5G410230	LEVER	2	1
	5G410240	TORSION SPRING	1	1
●	5G410250	COVER	1	1
	5G410260	STOPPER	1	1
	5G410270	BAND	1	1
	5G410280	NEUTRALIZING BRUSH	1	1
●	5G410290	ROLLER	4	1
	5G410300	PLATE SPRING	2	1
	5G410310	TORSION SPRING	1	1
●	5G410320	TRAY	1	1
●	5G410330	TRAY	1	1
	5G410340	BRACKET	1	1
	5G410350	REINFORCE PLATE	1	1
	5G410360	BRACKET	1	1
●	5G410370	REAR COVER	1	1
●	5G410380	CAP	4	1
●	5G410390	COVER	1	1
●	5G410400	COVER	1	1
●	5G410410	COVER	1	1
●	5G410420	COVER	1	1
●	5G410430	FRONT COVER	1	1
●	5G410440	FRONT COVER	1	1
●	5G410450	COVER	1	1
●	5G410460	FRONT COVER	1	1
●	5G410470	STOP RING	4	1,7,8
	5G410490	SEAL	1	1
	5G410500	PLATE SPRING	1	1

• Parts with "●" indicates the spare parts.

5G4

SP	Part. No.	Description	Quantity	Fig. No.
	5G410510	STOPPER	1	1
	5G410520	BAND	1	1
●	5G410530	COVER	1	1
	5G410540	GUIDE PLATE	1	1
	5G410550	GUIDE	2	1,8
●	5G410570	TOP COVER	1	1
	5G410580	PLATE SPRING	2	1
●	5G410590	TOP COVER	1	2
	5G410600	BRACKET	1	2
●	5G410610	ROLLER	1	2
	5G410620	TORSION SPRING	2	2
	5G410630	GUIDE PLATE	1	2
●	5G410640	ROLLER	2	2
	5G410650	SHAFT	1	2
	5G410660	PLATE SPRING	1	2
	5G410670	GUIDE	1	2
	5G410680	BUSHING	2	2,4
●	5G410690	GEAR	1	2
●	5G410700	STOP RING	41	2,3,4,5,6, 7,9,10,11
●	5G410710	PULLERY	1	2
●	5G410720	GEAR	1	2
●	5G410730	TIMING BELT	1	2
	5G410740	BRACKET	1	2
	5G410750	TENSION SPRING	1	2
	5G410760	BRACKET	1	2
●	5G410770	MOTOR	1	2
●	5G410780	COVER	1	2
	5G410790	TENSION SPRING	1	2
●	5G410800	FLANGE	3	2,4,7
	5G410810	SCREW	2	2
	5G410820	BRACKET	1	2
	5G410830	WIRE HARNESS ASSY	1	2
●	5G410840	PUSHBUTTON SWITCH	1	2
	5G410850	TENSION SPRING	1	2
	5G410860	LEVER	1	2
	5G410870	GUIDE PLATE	1	2
	5G410880	SCREW	15	2,8,13
	5G410890	BRACKET	1	2
	5G410900	PLATE SPRING	1	2

SP	Part. No.	Description	Quantity	Fig. No.
	5G410910	BRACKET	2	2
	5G410920	BRACKET	1	2
	5G410930	BUSHING	18	2,3,4,5,6, 7,11
●	5G410940	FRONT COVER	1	2
●	5G410950	GEAR	1	2
	5G410960	TORSION SPRING	1	2
	5G410970	GUIDE PLATE	1	3
	5G410980	TENSION SPRING	2	3
	5G410990	SHAFT	1	3
●	5G411000	STOP RING	4	3
●	5G411010	ROLLER	4	3
●	5G411020	ROLLER	2	3
	5G411030	HOLDER	1	3
	5G411040	HOLDER	1	3
	5G411050	GUIDE PLATE	1	3
	5G411060	SHAFT	1	3
	5G411070	SHIELD PLATE	1	3
	5G411080	FRAME ASSY	1	3
●	5G411090	GEAR	2	3
●	5G411100	STOP RING	27	3,4,5,8,9, 10
	5G411110	PRESSURE SPRING	1	3
●	5G411120	GEAR	1	3
	5G411130	BRACKET	1	3
●	5G411150	BALL BEARING	5	3,10
●	5G411160	GEAR	1	3
●	5G411170	GEAR	1	3
	5G411180	GUIDE PLATE	1	3
	5G411190	PLATE SPRING	2	3
●	5G411200	ROLLER	2	3
●	5G411210	NEUTRALIZING BRUSH	1	3
	5G411220	GUIDE PLATE	1	3
●	5G411230	ROLLER	1	3
	5G411240	BRACKET	1	3
	5G411250	BRACKET	1	3
●	5G411260	SEAL	4	3
	5G411270	PLATE SPRING	1	3
	5G411280	FRAME	1	3
●	5G411290	LEVER	1	3

• Parts with "●" indicates the spare parts.

SP	Part. No.	Description	Quantity	Fig. No.
●	5G411300	TORSION SPRING	1	3
	5G411310	LEVER	1	3
	5G411320	HOLDER	1	3
	5G411330	LEVER	1	3
	5G411340	HOLDER	1	3
	5G411350	HOLDER	1	3
	5G411360	CUSHION	1	4
	5G411370	HOOK	4	4
	5G411380	BRACKET	1	4
	5G411390	TENSION SPRING	2	4
●	5G411400	SOLID STATE SWITCH	21	4,5,6,7,8, 9,11,12
	5G411410	DUCT	1	4
●	5G411420	STOP RING	11	4,10
●	5G411430	CAM	1	4
●	5G411440	ROLLER	2	4
	5G411450	CUSHION	2	4
	5G411460	BRACKET	2	4
	5G411470	BUSHING	9	4,10
	5G411480	REINFORCE PLATE	2	4
	5G411490	SHAFT	2	4
●	5G411500	ROLLER	2	4
●	5G411510	ROLLER	2	4
	5G411520	PLATE SPRING	2	4
	5G411530	PLATE SPRING	4	4
	5G411540	PLATE SPRING	2	4
	5G411550	FRAME	1	4
●	5G411560	GEAR	1	4
●	5G411570	PULLERY	1	4
	5G411580	BUSHING	2	4
	5G411590	TENSION SPRING	2	4
	5G411600	SHOULDER SCREW	2	4
	5G411610	SLIDER	2	4
	5G411620	BRACKET	1	4
●	5G411630	GEAR	1	4
	5G411640	WIRE HARNESS ASSY	1	4
	5G411650	WIRE HARNESS ASSY	1	4
	5G411660	TENSION SPRING	2	4,10
●	5G411670	CLUTCH	1	4
●	5G411680	PULLERY	1	4

SP	Part. No.	Description	Quantity	Fig. No.
●	5G411690	TIMING BELT	1	4
●	5G411700	PULLEY	1	4
	5G411710	TENSION SPRING	2	4
	5G411720	GUIDE PLATE	1	4
●	5G411730	CAM	1	4
●	5G411740	HOLDER	2	4
●	5G411750	ROLLER	2	4
	5G411760	GUIDE PLATE	1	4
●	5G411770	SEAL	1	4
●	5G411780	ROLLER	1	4
	5G411790	GUIDE PLATE	1	4
●	5G411800	COLLER	2	4
	5G411810	BRACKET	1	4
	5G411820	SHAFT	1	4
	5G411830	BRACKET	1	4
	5G411840	GUIDE PLATE	1	4
●	5G411850	CAM	1	4
	5G411860	SHAFT	1	4
	5G411870	BRACKET	1	4
	5G411880	EARTH GROUND	1	4
	5G411890	SHAFT	1	4
●	5G411900	CAM	1	4
	5G411910	FRAME	1	4
	5G411920	WIRE HARNESS ASSY	1	4
●	5G411930	SOLID STATE SWITCH	1	4
	5G411940	STOPPER	1	5
●	5G411950	HOOK	2	5
	5G411960	TENSION SPRING	2	5
●	5G411970	HOOK	2	5
	5G411980	SET PLATE	2	5
	5G411990	GUIDE	2	5
	5G412000	STOPPER	2	5
	5G412010	SHAFT	1	5
●	5G412020	GEAR	2	5
●	5G412030	PULLEY	1	5
	5G412040	FLANGE	2	5
	5G412050	BUSHING	5	5,9,10
●	5G412060	PULLEY	1	5
	5G412070	FRAME	1	5
	5G412080	FRAME	1	5

• Parts with "●" indicates the spare parts.

SP	Part. No.	Description	Quantity	Fig. No.
●	5G412090	GEAR	1	5
●	5G412100	GEAR	1	5
	5G412110	FLANGE	2	5,6
●	5G412120	GEAR	1	5
	5G412130	PLATE	1	5
	5G412140	PLATE	1	5
●	5G412150	TRAY	1	5
	5G412160	PLATE SPRING	2	5
	5G412170	GUIDE PLATE	1	5
●	5G412180	PAWL	2	5
●	5G412190	PULLEY	2	5
	5G412200	SCREW	5	5,9,11
●	5G412210	LEVER	1	5
	5G412220	WEIGHT	1	5
	5G412230	GUIDE PLATE	1	5
	5G412240	BRACKET	1	5
	5G412250	SHAFT	1	5
●	5G412260	LEVER	1	5
	5G412270	TORSION SPRING	1	5
	5G412280	BASE FLAME	1	5
	5G412290	TENSION SPRING	1	5
	5G412300	BRACKET	1	5
●	5G412310	MOTOR	2	5,6
●	5G412320	MOTOR	2	5
	5G412330	WIRE HARNESS ASSY	1	5
	5G412340	BRACKET	1	5
	5G412350	PUSHBUTTON SWITCH	3	5,7,8
	5G412360	PLATE SPRING	1	5
	5G412370	HOLDER	1	5
●	5G412380	TRAY	1	5
●	5G412390	LEVER	1	5
	5G412400	PLATE	1	5
	5G412410	PLATE	1	5
	5G412420	RACK	1	5
	5G412430	GUIDE PLATE	1	5
	5G412440	HOLDER	1	5
	5G412450	TENSION SPRING	1	5
●	5G412460	WEIGHT	1	5
	5G412470	GUIDE	1	5
	5G412480	PRESSURE SPRING	3	5

SP	Part. No.	Description	Quantity	Fig. No.
	5G412490	BRACKET	1	5
	5G412500	SHAFT	1	7
	5G412510	SHAFT	1	7
	5G412520	GUIDE PLATE	1	7
●	5G412530	ROLLER	2	7
●	5G412540	ROLLER	2	7
●	5G412550	NEUTRALIZING BRUSH	1	7
	5G412560	WIRE HARNESS ASSY	2	7,11
	5G412570	BRACKET	1	7
●	5G412580	ACTUATOR	1	7
●	5G412590	CAM	2	7
●	5G412600	TIMING BELT	1	11
●	5G412610	PULLEY	1	7
●	5G412620	TIMING BELT	1	6
	5G412630	FLANGE	1	7
●	5G412640	PULLEY	1	7
●	5G412650	ARM	2	7
●	5G412660	GEAR	1	6
●	5G412670	TIMING BELT	1	6
	5G412680	TENSION SPRING	2	6
	5G412690	ARM	1	6
	5G412700	ARM	1	6
●	5G412710	PULLEY	1	6
●	5G412720	ACTUATOR	1	6
	5G412730	BRACKET	1	6
	5G412740	BRACKET	1	6
	5G412750	BRACKET	1	6
	5G412760	WIRE HARNESS ASSY	2	6,11
	5G412770	BRACKET	1	7
	5G412780	HOLDER	1	7
	5G412790	GUIDE	1	6
	5G412800	CUSHION	8	6,7
	5G412810	GUIDE	1	6
	5G412820	GUIDE	1	6
	5G412830	GUIDE	1	6
	5G412840	HOLDER	1	6
	5G412850	PADDLE	4	6
	5G412860	PAWL	1	6
●	5G412870	PADDLE	3	6
	5G412880	LEVER	1	6

• Parts with "●" indicates the spare parts.

SP	Part. No.	Description	Quantity	Fig. No.
	5G412890	SHAFT	1	6
	5G412900	HOLDER	1	6
●	5G412910	ROLLER	2	6
●	5G412920	GEAR	2	6
	5G412930	HOLDER	1	6
	5G412940	HOLDER	1	6
	5G412950	HOLDER	1	6
	5G412960	HOLDER	1	6
	5G412970	SHAFT	1	6
●	5G412980	GEAR	2	6
	5G412990	LEVER	1	6
	5G413000	ARM	1	6
	5G413010	ARM	1	6
	5G413020	TENSION SPRING	2	6
	5G413030	PRESSURE SPRING	1	7
	5G413040	GUIDE	1	7
●	5G413050	MEMBER	4	7
●	5G413060	ROLLER	2	7
	5G413070	BRACKET	1	7
●	5G413080	ROLLER	2	7
	5G413090	HOLDER	6	6
●	5G413100	PULLEY	1	6
	5G413110	PAWL	1	6
	5G413120	FLANGE	1	6
	5G413130	GUIDE	1	8
	5G413140	GUIDE	1	8
●	5G413150	COVER	1	8
	5G413160	GUIDE PLATE	1	8
	5G413170	DUCT	1	8
●	5G413180	COVER	1	8
	5G413190	LEVER	1	8
	5G413200	GUIDE	1	8
	5G413210	LEVER	1	8
	5G413220	GUIDE	2	8
	5G413230	LEVER	1	8
	5G413240	GUIDE	1	8
	5G413250	BRACKET	1	8
	5G413260	CUSHION	2	8
	5G413270	STOPPER	1	8
	5G413280	PLATE	1	8

SP	Part. No.	Description	Quantity	Fig. No.
	5G413290	BUSHING	1	8
	5G413300	BRACKET	1	8
	5G413310	PLATE SPRING	2	8
	5G413320	PLATE SPRING	2	8
●	5G413330	ROLLER	2	8
●	5G413340	TRAY	1	8
	5G413350	POSITIONING PLATE	1	8
	5G413360	TENSION SPRING	2	8,9
●	5G413370	ACTUATOR	1	8
	5G413380	TENSION SPRING	1	8
	5G413390	ARM	1	8
	5G413400	WEIGHT	1	8
	5G413410	LEVER	1	8
	5G413420	SCREW	4	8
	5G413430	BRACKET	4	8
●	5G413440	ROLLER	4	8
	5G413450	SHAFT	4	8
	5G413460	REINFORCE PLATE	1	8
	5G413470	BRACKET	1	8
	5G413480	PLATE SPRING	1	8
●	5G413490	COVER	1	8
●	5G413500	COVER	2	8
	5G413510	HOLDER	1	8
	5G413520	LEVER	1	8
	5G413530	LEVER	1	8
	5G413540	HOLDER	1	8
	5G413550	STOPPER	1	8
	5G413560	BRACKET	1	8
	5G413570	WEIGHT	1	8
	5G413580	CUSHION	1	8
	5G413590	TENSION SPRING	1	8
	5G413600	TENSION SPRING	2	8
●	5G413610	PULLEY	1	9
●	5G413620	TIMING BELT	1	9
	5G413630	HOLDER	1	9
	5G413640	PRESSURE SPRING	1	9
●	5G413650	LEVER	1	9
	5G413660	TORSION SPRING	1	9
●	5G413670	PULLEY	1	9
●	5G413680	GEAR	1	9

• Parts with "●" indicates the spare parts.

SP	Part. No.	Description	Quantity	Fig. No.
●	5G413690	HOLDER	1	9
●	5G413700	LEVER	1	9
	5G413710	TORSION SPRING	1	9
	5G413720	TORSION SPRING	1	9
●	5G413730	ROLLER	1	9
	5G413740	SHAFT	1	9
	5G413750	LEVER	1	9
	5G413760	HOLDER	1	9
	5G413770	BRACKET	1	9
●	5G413780	FLANGE	4	9
●	5G413790	PULLEY	2	9
	5G413800	BRACKET	1	9
	5G413810	TENSION SPRING	2	9
	5G413820	BRACKET	1	9
	5G413830	SHOULDER SCREW	1	9
	5G413840	LEVER	1	9
	5G413850	WIRE HARNESS ASSY	1	9
	5G413860	PLATE	2	9
	5G413870	HOLDER	1	9
●	5G413880	TIMING BELT	2	9
	5G413890	BRACKET	1	9
	5G413900	BUSHING	1	9
●	5G413910	GEAR	1	9
	5G413920	LEVER	1	9
	5G413930	LEVER	1	9
	5G413940	SHOULDER SCREW	1	9
●	5G413950	COVER	1	9
	5G413960	PLATE	1	9
	5G413970	SCREW	1	9
	5G413980	GUIDE PLATE	1	9
	5G413990	TENSION SPRING	1	9
●	5G414000	COVER	1	9
	5G414010	BRACKET	1	9
●	5G414020	ROLLER	4	9,11
	5G414030	BRACKET	1	9
	5G414040	TENSION SPRING	1	9
●	5G414050	PULLEY	1	9
●	5G414060	ROLLER	4	9
	5G414070	HOLDER	1	9
	5G414080	BRACKET	1	9

SP	Part. No.	Description	Quantity	Fig. No.
	5G414090	HOLDER	1	9
	5G414100	SHAFT	1	9
	5G414110	BRACKET	1	9
●	5G414120	COVER	1	10
●	5G414130	MOTOR	1	10
●	5G414140	PULLEY	1	10
●	5G414150	TIMING BELT	1	10
	5G414160	PLATE	1	10
●	5G414170	SOLID STATE SWITCH	1	10
	5G414180	DUCT	1	10
	5G414190	BRACKET	1	10
	5G414200	PRESSURE SPRING	2	10
	5G414210	PLATE	1	10
	5G414220	SCREW	2	10
	5G414230	WIRE HARNESS ASSY	1	10
	5G414240	SHAFT	1	10
	5G414250	SHAFT	1	10
●	5G414260	GEAR	1	10
●	5G414270	GEAR	1	10
●	5G414280	GEAR	1	10
●	5G414290	GEAR	2	10
●	5G414300	GEAR	1	10
●	5G414310	GEAR	1	10
●	5G414320	GEAR	1	10
	5G414330	BRACKET	1	10
●	5G414340	GEAR	1	10
●	5G414350	GEAR	1	10
●	5G414360	GEAR	1	10
●	5G414370	GEAR	1	10
●	5G414380	KNOB	1	10
	5G414390	BRACKET	1	10
●	5G414400	GEAR	1	10
●	5G414410	GEAR	1	10
●	5G414420	GEAR	1	10
	5G414430	BRACKET	1	10
	5G414440	BRACKET	1	11
	5G414450	SCREW	4	11
	5G414460	HOLDER	1	11
●	5G414470	GEAR	1	11
●	5G414480	ROLLER	1	11

• Parts with "●" indicates the spare parts.

SP	Part. No.	Description	Quantity	Fig. No.
●	5G414490	PULLEY	1	11
●	5G414500	TIMING BELT	1	11
	5G414510	SCREW	1	11
	5G414520	BRACKET	1	11
	5G414530	TENSION SPRING	1	11
	5G414540	DUCT	1	11
●	5G414550	MOTOR	1	11
	5G414560	BRACKET	1	11
●	5G414570	TIMING BELT	1	11
●	5G414580	PULLEY	1	11
	5G414590	BRACKET	1	11
	5G414600	TENSION SPRING	1	11
	5G414610	WIRE HARNESS ASSY	1	11
	5G414620	WIRE HARNESS ASSY	1	11
	5G414630	WIRE HARNESS ASSY	1	11
	5G414640	WIRE HARNESS ASSY	1	11
	5G414650	WAIRE HARNESS ASSY	1	11
	5G414660	BRACKET	1	11
●	5G414670	PULLEY	1	11
●	5G414680	TIMING BELT	1	11
	5G414690	BRACKET	1	11
	5G414700	SHAFT	1	11
	5G414710	BRACKET	1	11
	5G414720	WIRE HARNESS ASSY	1	11
●	5G414730	MOTOR	1	11
	5G414740	PLATE	1	11
●	5G414750	PULLEY	1	11
●	5G414760	GEAR	1	11
●	5G414770	GEAR	1	11
●	5G414780	GEAR	1	11
	5G414790	PWB SUPPORT	1	11
	5G414800	PWB SUPPORT	2	11
	5G414810	DUCT	1	11
●	5G414820	ROLLER	1	11
●	5G414830	LEVER	1	11
	5G414840	TENSION SPRING	1	11
	5G414850	GUIDE PLATE	1	11
	5G414860	WIRE HARNESS ASSY	1	11
	5G414870	WIRE HARNESS ASSY	1	11
	5G414880	WIRE HARNESS ASSY	1	11

SP	Part. No.	Description	Quantity	Fig. No.
●	5G414890	MOTOR	1	12
	5G414900	TENSION SPRING	1	12
	5G414910	DUCT	1	12
	5G414920	BRACKET	1	12
●	5G414930	GEAR	1	12
●	5G414940	GEAR	1	12
	5G414950	BRACKET	1	12
	5G414960	WIRE HARNESS ASSY	1	12
	5G414970	WIRE HARNESS ASSY	1	12
	5G414980	WIRE HARNESS ASSY	1	12
	5G414990	GUIDE	1	12
●	5G415000	PWB ASSY	1	12
●	5G415010	MOTOR	1	12
	5G415020	SHUTTER	1	12
	5G415030	GUIDE	1	12
	5G415040	PLATE	1	12
●	5G415050	PWB ASSY	1	12
	5G415060	BASE	1	12
	5G415070	WIRE HARNESS ASSY	1	12
	5G415080	SHOULDER SCREW	4	12
●	5G415090	ROLLER	1	12
●	5G415100	ROLLER	3	12
	5G415110	GUIDE	1	12
	5G415120	TRASH BOX	1	12
	5G415130	GUIDE	1	12
	5G415140	HOLDER	1	12
●	5G415150	PWB ASSY	1	12
	5G415160	HOLDER	1	12
●	5G415170	PWB ASSY	1	12
●	5G415180	COVER	1	12
	5G415190	WASHER	3	13
	5G415200	BUSHING	8	13
●	5G415210	PULLEY	1	13
	5G415220	RETAINING RING	16	13
	5G415230	GUIDE	1	13
	5G415240	HOLDER	1	13
	5G415250	BRACKET	1	13
	5G415260	WIRE HARNESS ASSY	1	13
●	5G415270	MOTOR	1	13
	5G415280	STOPPER	1	13

• Parts with "●" indicates the spare parts.

5G4

SP	Part. No.	Description	Quantity	Fig. No.
●	5G415290	SPROCKET	1	13
	5G415300	PRESSURE SPRING	1	13
	5G415310	HOLDER	1	13
●	5G415320	ROLLER	1	13
	5G415330	PLATE	1	13
	5G415340	TENSION SPRING	1	13
	5G415350	WIRING SADDLE	1	13
	5G415360	HOLDER	1	13
●	5G415370	PULLEY	1	13
	5G415380	WASHER	1	13
●	5G415390	PWB ASSY	1	13
●	5G415400	PWB ASSY	1	13
●	5G415410	STAPLE CARTRIDGE	1	13
	5G415420	SHAFT	2	13
●	5G415430	ROLLER	2	13
	5G415440	HOLDER	1	13
	5G415450	GUIDE	1	13
	5G415460	CUSHION	1	13
●	5G415470	STOP RING	1	13
	5G415480	TORSION SPRING	1	13
	5G415490	BUSHING	1	13
	5G415500	BRACKET	1	13
	5G415510	TENSION SPRING	1	13
●	5G415520	COLLER	1	13
●	5G415530	COVER	1	13
●	5G415540	COVER	1	13
●	5G415550	KNOB	1	13
●	5G415560	KNOB	1	13
●	5G415570	PULLEY	1	13
●	5G415580	ROLLER	1	13
	5G415590	PRESSURE SPRING	1	13
	5G415600	FLANGE	1	13
●	5G415610	TIMING BELT	1	13
●	5G415620	PULLEY	1	13
●	5G415630	TIMING BELT	1	13
●	5G415640	GEAR	1	13
●	5G415650	PULLEY	1	13
●	5G415660	GEAR	1	13
●	5G415670	PIN	1	13
●	5G415680	GEAR	1	13

SP	Part. No.	Description	Quantity	Fig. No.
	5G415690	GUIDE	1	13
●	5G415700	TIMING BELT	1	13
	5G415710	FLEXIBLE CABLE	1	13
	5G415720	PRESSURE SPRING	1	4
	5G415730	GUIDE	2	4
●	5G415740	GUIDE	1	2
●	5G415750	GUIDE	1	2
	5G415760	GUIDE	1	7
	5G415770	GUIDE	1	7
	5G415780	GUIDE	1	7
	5G415790	GUIDE	1	7
	5G415800	FERRITE CORE	1	12
●	5G415810	PUNCH UNIT	1	12
●	5G415820	PUNCH UNIT	1	12
●	5G415830	PUNCH UNIT	1	12
●	5G415840	PUNCH UNIT	1	12
●	5G415850	IC	1	11
●	5G415860	INSTRUCTIONS	1	1
●	5G415870	LABEL	1	13
●	5G415880	LABEL	1	1
	5G415890	STOPPER	4	2
	5G415900	REINFORCE PLATE	1	14
●	5G415910	GEAR	1	14
●	5G415920	GEAR	1	14
●	5G415930	GEAR	1	14
●	5G415940	SPRING	1	14
	5G415950	GUIDE	1	14
	5G415960	WIRE HARNESS ASY	1	14
	5G415970	HOLDER	1	8
	5G415980	SPACER	1	8
●	5G415990	GUIDE	4	14
●	5G416180	TIMING BELT	2	5.6

• Parts with "●" indicates the spare parts.

CLASSIFICATION OF THE SCREWS IN ILLUSTRATION

<u>REF.</u>	<u>ITEM #</u>	<u>DESCRIPTION</u>	<u>REF.</u>	<u>ITEM #</u>	<u>DESCRIPTION</u>
0242	5GF20900	SPRING ROLL PIN	1660	5G416020	SCREW
0501	5F931500	PIN	1663	50355450	SCREW
0502	50355050	PIN	1717	5G416110	SCREW
0504	5BL07240	PIN	1719	5G416120	SCREW
0508	50355060	PIN	3544	5F931400	TAPPING SCREW
0509	50355070	PIN	3704	50355700	TAPPING SCREW
0510	5F931490	PIN	3902	5F931450	TAPPING SCREW
0513	5BL10510	PIN	3907	50355760	TAPPING SCREW
0531	5GD20530	PIN	3909	5G212640	TAPPING SCREW
1208	50355130	SCREW	3918	5BM09960	TAPPING SCREW
1210	50355140	SCREW	3933	5G416140	TAPPING SCREW
1305	50355160	SCREW	8408	5G416040	WASHER
1308	50355170	SCREW	8420	5G416050	WASHER
1315	50355220	SCREW	8508	5F931350	WASHER
1318	50355230	SCREW	9109	50356270	RETAINING RING
1381	5G416000	SCREW	9135	5G416080	RETAINING RING
1607	5BL10610	SCREW	9136	5G416090	RETAINING RING
1620	50355380	SCREW	9139	5G212560	RETAINING RING
1628	5GF20850	SCREW	9302	50356070	RETAINING RING
1659	5G416030	SCREW			

KYOCERA MITA AMERICA, INC.

Headquarters:

225 Sand Road, P.O. Box 40008
Fairfield, New Jersey 07004-0008
TEL : (973) 808-8444
FAX : (973) 882-6000

New York Show Room:

1410 Broadway 23rd floor
New York, NY 10018
TEL : (917) 286-5400
FAX : (917) 286-5402

Northeastern Region:

225 Sand Road, P.O. Box 40008
Fairfield, New Jersey 07004-0008
TEL : (973) 808-8444
FAX : (973) 882-4401

Midwestern Region:

201 Hansen Court Suite 119
Wood Dale, Illinois 60191
TEL : (630) 238-9982
FAX : (630) 238-9487

Western Region:

14101 Alton Parkway,
Irvine, California 92618-7006
TEL : (949) 457-9000
FAX : (949) 457-9119

Southeastern Region:

1500 Oakbrook Drive,
Norcross, Georgia 30093
TEL : (770) 729-9786
FAX : (770) 729-9873

Southwestern Region:

2825 West Story Road,
Irving, Texas 75038-5299
TEL : (972) 550-8987
FAX : (972) 570-4704

Dallas Parts Distribution Center & National Training Center:

2825 West Story Road,
Irving, Texas 75038-5299
TEL : (972) 659-0055
FAX : (972) 570-5816

KYOCERA MITA CANADA, LTD.

6120 Kestrel Road, Mississauga,
Ontario L5T 1S8, Canada
TEL : (905) 670-4425
FAX : (905) 670-8116

KYOCERA MITA MEXICO, S.A. DE C.V.

Av. 16 de Septiembre #407
Col. Santa Inés,
02130 Azcapotzalco
México, D.F. México
TEL : (55) 383-2741
FAX : (55) 383-7804

© 2002 KYOCERA MITA CORPORATION

 **KYOCERA** is a trademark of Kyocera Corporation

mita is a registered trademark of KYOCERA MITA CORPORATION

Printed in U.S.A.